

PHOENIX 30/34

WALK-BEHIND SCRUBBER

- Spare Parts Catalog



PowerBoss, Inc.
A Member of The Hako Group

PowerBoss®

The Power of Clean

This manual is for the **POWERBOSS PHOENIX 30/34**. This manual provides the necessary operating and preventive maintenance instructions. Operators must read and understand this manual before operating or servicing this machine.

This machine was designed to give you excellent performance and efficiency. For best results and minimal cost, please follow the general guidelines below:

Operate the machine with reasonable care.

Follow the manufacturers suggested maintenance instructions as provided in this booklet.

Use original PowerBoss supplied parts.

TECHNICAL SPECIFICATIONS

Model

PHOENIX

Model No.

PHOENIX 30/34

Current

70 Amps

Voltage, Batteries

36 volts, 6-6volt

Battery Capacity

275 AH

Sound Level

72dB

Dimensions (LxWxH)

66" x 44" x 47" (167.64cm x 111.76cm x 119.38cm)

Gross Weight

1,020 lbs (462.66 kg) with batteries

614 lbs (278.51 kg) without batteries

Working Grade Transport

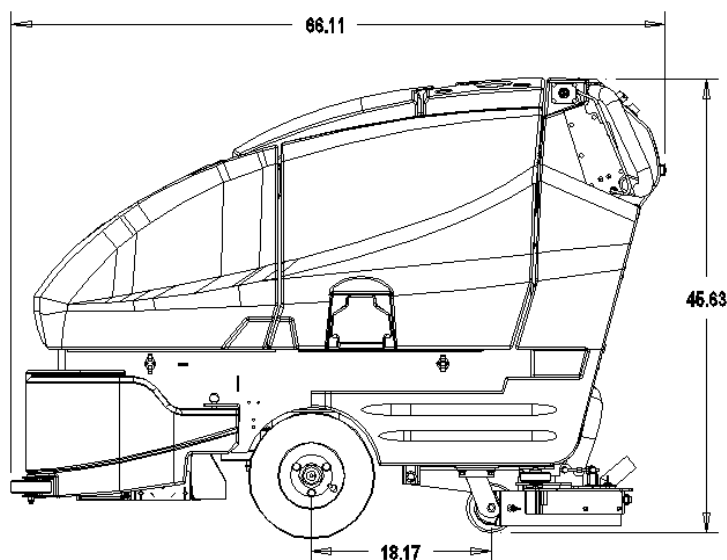
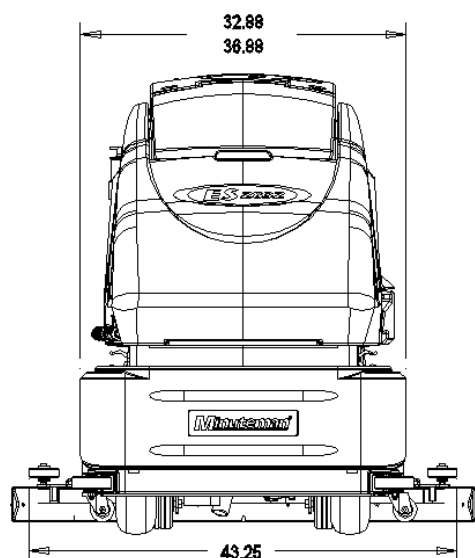
16% (10°)

Working Grade Cleaning

10% (7°)

Inflate Wheel Pressure to

50 PSI (Front Wheel)



EC Declaration of Conformity according to
Directives 98/37/EC,89/336/EEC and 72/23/EEC

We,PowerBoss,Inc. of 175 Anderson St. Aberdeen North Carolina 28315 USA, declare under our sole responsibility that the product Phoenix 30, Phoenix 34 Automatic Floor Scrubbing machines to which this declaration relates corresponds to the relevant requirements of the EC Directives 98/37/EC,89/336/EEC and 72/23/EEC.

The following standards were used to determine compliance with the Directives: EN292,EN60335-2-72,EN953,EN55022:1998 AND EN60335-1:2002.

SOUND

72 db
Operator

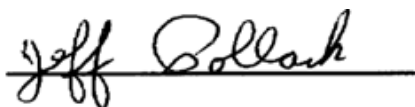
69 db
At 3m

VIBRATION

1.9 m/s²
At Operators Hand Grips

Test were conducted on 3/14/04 with calibrated sound and vibration equipment under the conditions noted below:

General Condition:	Cloudy	Wind:	0 km/hr
Temperature:	29° C	Humidity	85%
Barometric Pressure:	29.5		



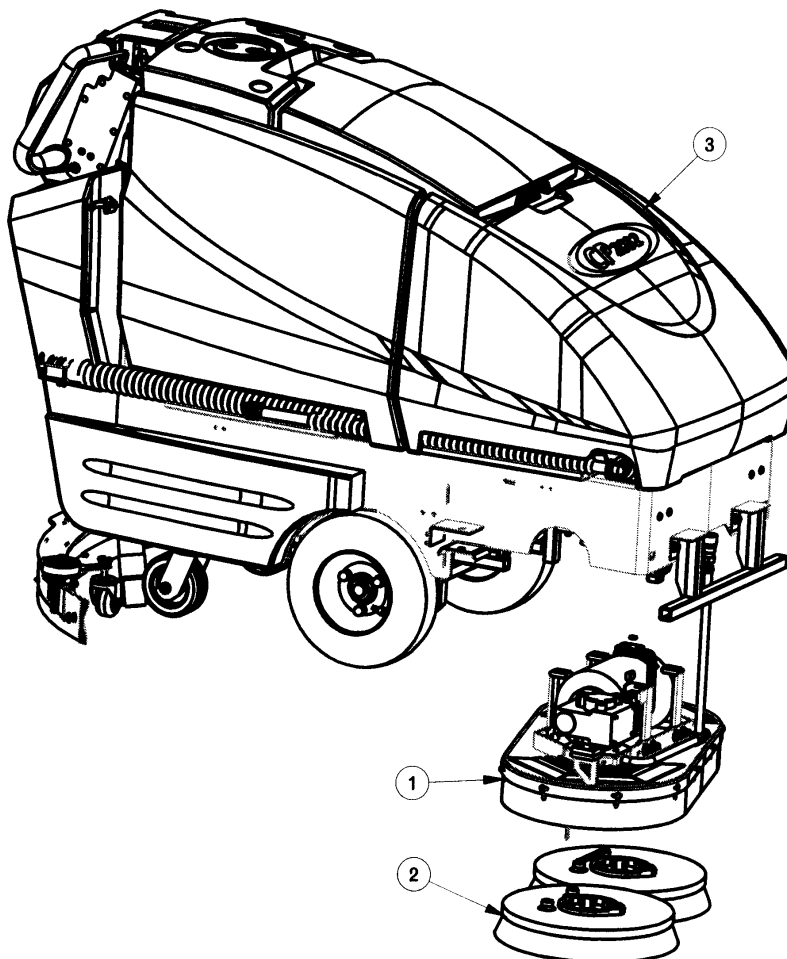
Jeff Pollock, Standards Engineer

4/13/2004

Date

EXPLODED VIEWS

BILL OF MATERIAL CP28DQP			
ITEM	PART NO.	REQ'D	DESCRIPTION
1	281601	1	DISK SCRUBDECK ASSY 32" NO BRUSH
2	3313135	2	BRUSH 14", PLASTIC NYLON
2A	3313125	2	BRUSH 14", POWERGRIT 80
2B	3313127	2	BRUSH 14", POWERGRIT 46
2C	3313131	2	BRUSH 14", WIRE
2D	3313133	2	BRUSH 14", BUTCHER WIRE
2E	3315494	2	PAD DRIVER W/PAD HOLDER 14"
2F	3315386	2	BRUSH 14", POWERGRIT 120
3	ES2832	1	BASE ASSY

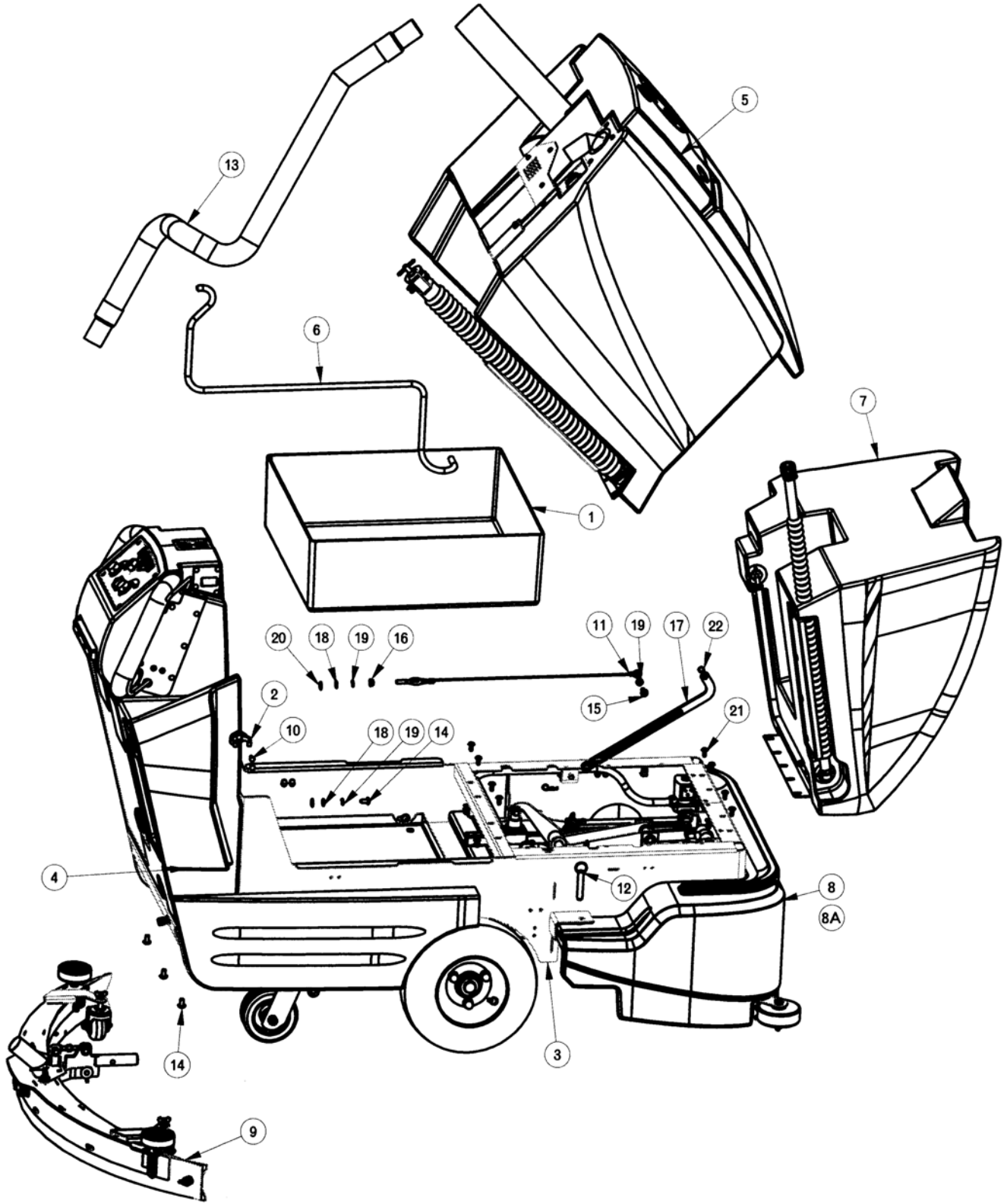


BILL OF MATERIAL CP32DQP			
ITEM	PART NO.	REQ'D	DESCRIPTION
1	281651	1	DISK SCRUBDECK ASSY 32" NO BRUSH
2	3313136	2	BRUSH SCRUB 16" PLASTIC NYLON
2A	3313126	2	BRUSH 16", POWERGRIT 80
2B	3313128	2	BRUSH 16", POWERGRIT 46
2C	3313132	2	BRUSH 16", WIRE
2D	3315385	2	BRUSH 16, POWERGRIT 120
2E	3315495	2	PAD DRIVER W/PAD HOLDER
3	ES2832	1	BASE ASSY

BILL OF MATERIAL CP28CQP			
ITEM	PART NO.	REQ'D	DESCRIPTION
1	281501	1	CYLINDRICAL SCRUBDECK ASSY, 28" NO BRUSHES
1	281520	2	BRUSH, CYL 28" .022 NYLON
1	715803	1	DECAL, CP2832
2A	281521	2	BRUSH, CYL 28" .028 BRITLLE
2B	281522	2	BRUSH 28", POLYPROPYLENE .022
2C	281525	2	BRUSH 28", POWERSCRUB 120 GRIT
2D	281526	2	BRUSH 28", NYLOGRIT 80 GRIT
2E	281527	2	BRUSH 28", STRATAGRIT 48 GRIT
2F	281528	2	BRUSH 28", SCRUBGRIT 180 GR
3	ES2832	1	BASE ASSY



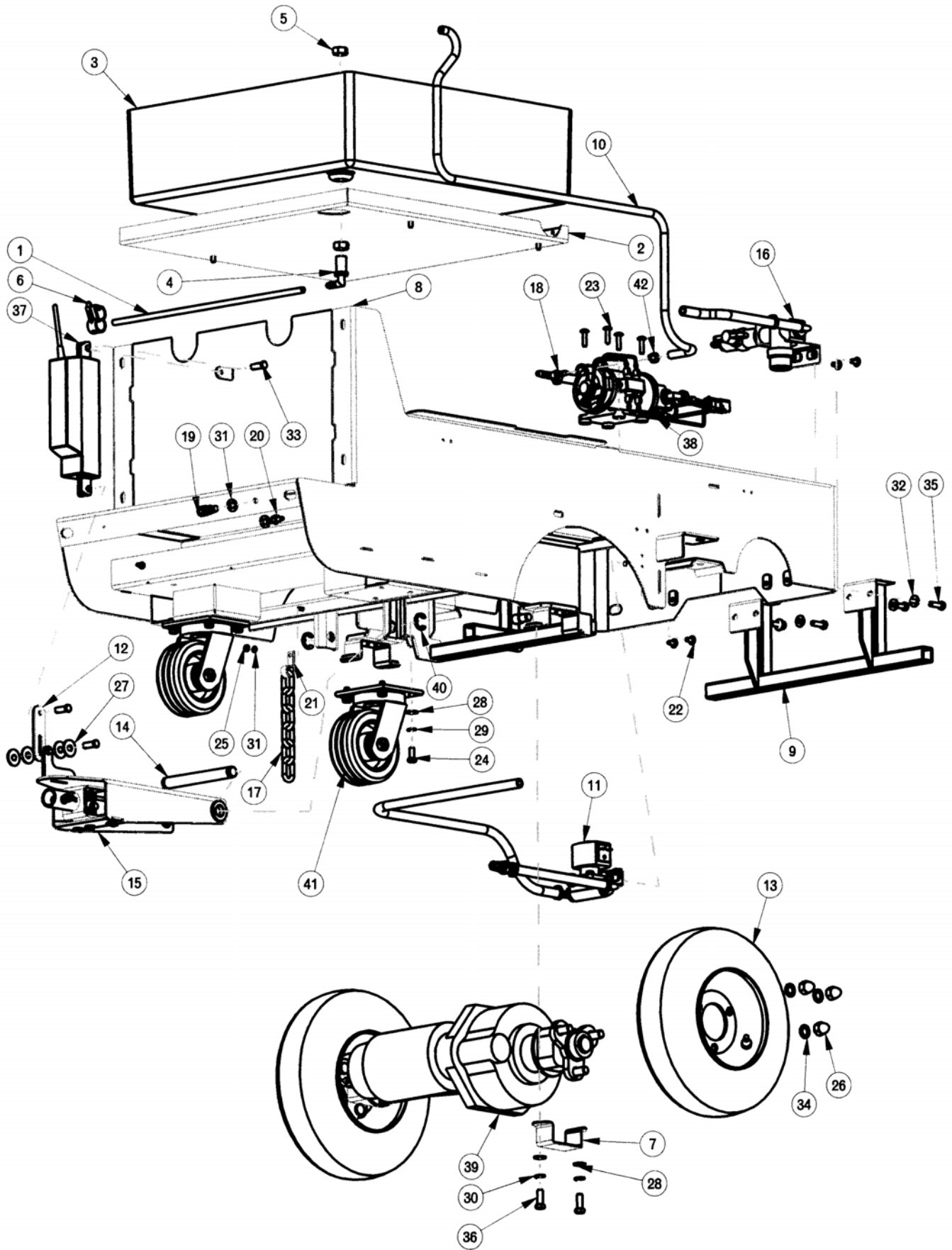
BILL OF MATERIAL CP32CQP			
ITEM	PART NO.	REQ'D	DESCRIPTION
1	281551	1	CYLINDRICAL SCRUBDECK ASSY 32" NO BRUSH
2	281530	2	BRUSH, CYL 32" .022 NYLON
2A	281531	2	BRUSH, CYL 32" .028 BRISTLE
2B	281532	2	BRUSH 32", POLYPROPYLENE .022
2C	281535	2	BRUSH 32", POWERSCRUB 120 GRIT
2D	281536	2	BRUSH 32", NYLOGRIT 80 GRIT
2E	281537	2	BRUSH 32", STRATAGRIT 48 GRIT
2F	281538	2	BRUSH 32", SCRUBGRIT 180 GR
3	ES2832	1	BASE ASSY



BILL OF MATERIAL ES2832

ITEM	PART NO.	REQ'D	DESCRIPTION
1	320215	1	BATTERY TRAY LINER
2	260579	1	TOOL CLIP, 1.5" HOSE
3	320810	1	MAINFRAME WELDMENT ES2832
4	320820	1	ES2832 CONSOLE ASSY
5	320830	1	ES2832 RECOVERY TANK ASSY
6	320834	1	HOSE 1/4" X 68"
7	320840	1	ES2832 SOLUTION TANK ASSY
8	320880G	1	ES2832 DECK COVER ASSY 32"
8A	320972G	1	ES2832 DECK COVER ASSY 28"
9	320930	1	REAR SQUEEGEE ASSY, 32"
10	711160	2	#10 X 5/8 HI-LO
11	320973	1	RECOVERY TANK CABLE ASSY
12	320995	2	COTT HITCH PIN 1/2" X 2-1/2"
13	450090	1	VAC HOSE
14	710196	10	SCR- MC 5/16-18 X .62
15	710197	1	SCR-MC 5/16-18 X .75 PHILLIPS
16	711379	1	NUT, FLANGED WIZZ 5/16-18
17	320912	1	SOLUTION TANK STOP
18	711506	4	WSR-FLT .344 X .690 X .062 STL ZINC
19	711545	21	WSR-HELICAL 5/16
20	711575	10	WSR-FLT .31x.75x.06ST
21	711565	8	SCR-MC 1/4-20X.63 SS TR HD
22	711808	2	COTTER PIN-HAIR #13

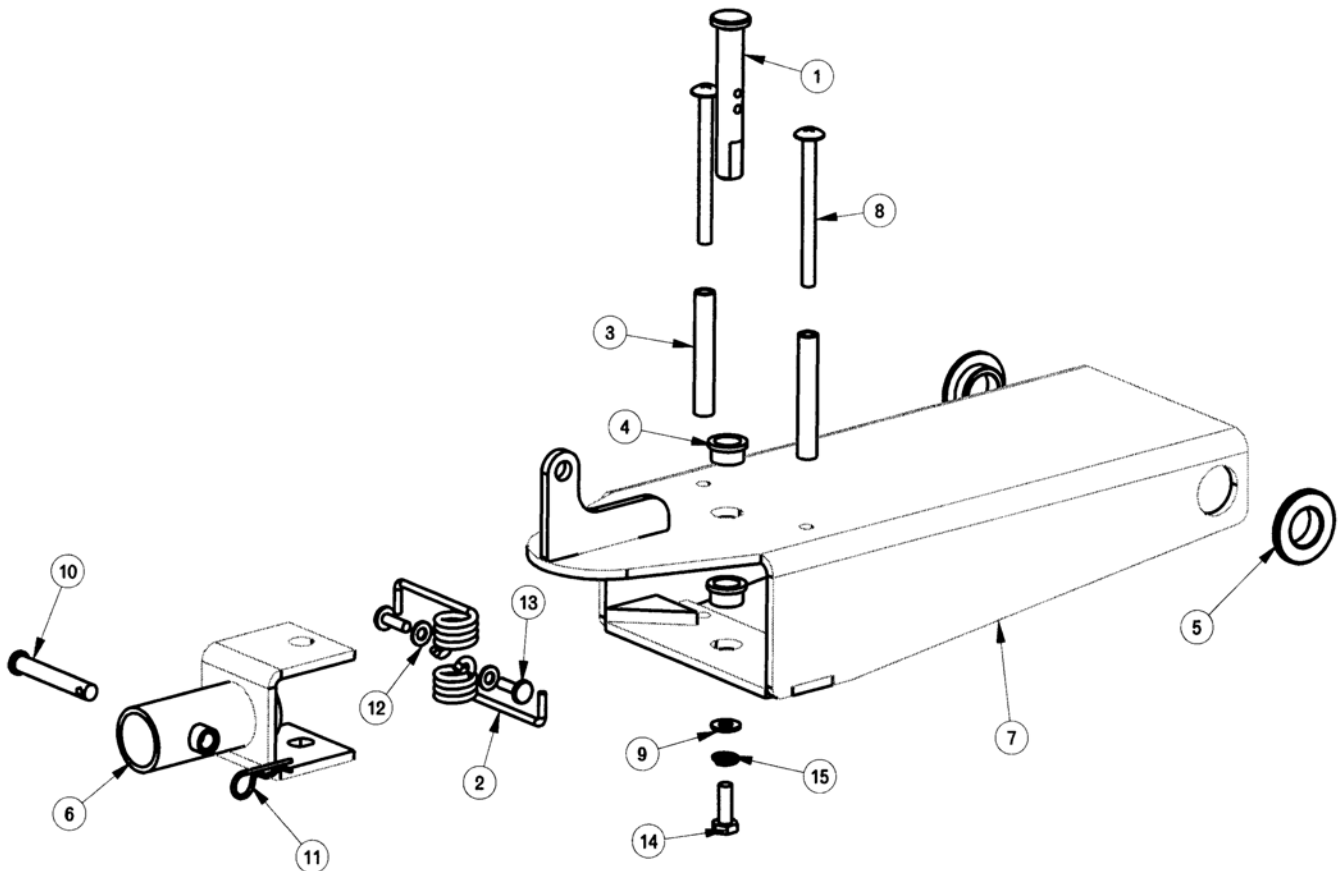
DRIVE ASSEMBLY



BILL OF MATERIAL ES2832 DRIVE SYSTEM			
ITEM	PART NO.	REQ'D	DESCRIPTION
1	260224	1	18" HOSE
2	320118	1	BATTERY TRAY
3	320215	1	BATTERY TRAY LINER
4	320271	1	NOZZLE BODY-ELBOW
5	320272	2	NOZZLE BODY LOCKNUT
6	320273	1	HOSE SHUT-OFF CLAMP
7	320705	2	TRANSAXLE BRACKET, LOWER
8	320810	1	MAINFRAME WELDMENT ES2832
9	320813	1	BUMPER SUPPORT BRACKET - WMT
10	320834	1	HOSE 1/4" X 68"
11	320843	1	SOLENOID SUB-ASS'Y
12	320893	1	SQUEEGEE LIFT LINK
13	320902	2	WHEEL, PNEUMATIC 12'
14	320909	1	LIFT MECH ASSY PIVOT SHAFT
15	320920	1	SQUEEGEE LIFT MECH ASSY
16	320990	1	IN-LINE FILTER ASSY
17	320996	1	STATIC GROUNDING CHAIN
18	450076	2	CRIMP CLAMP SS 185R
19	450221	1	Q.C. COUPLING (FEMALE)
20	450225	1	FITTING BRASS 1/8 FPT - 1/4 BARB
21	670115	1	CHAIN MOUNTING STRAP
22	710178	4	SCR-MC 1/4-20 X .50 TRUSS STPL
23	710182	4	SCR-MC 1/4-20 X 1.00 STPL
24	711228	8	BLT-HH 5/16-18 X .75 ST PL
25	711310	2	NUT, HEX 10-32 ST PL
26	711390	6	NUT, ACORN 1/2'-20 STL ZINC
27	711507	4	WSR-FLAT .37 X 1.12 X .06
28	711515	14	WSR-FLAT .406 X .812 X .0625
29	711545	12	WSR-HELICAL 5/16
30	711546	4	WSR-HELICAL 3/8
31	711553	2	WSR- INTERNAL LOCK #10
32	711575	4	WSR-FLT .31x.75x.06ST
33	711668	3	CLEVIS PIN, 3/8X1 11-141
34	712310	6	WSR- FLAT .52 X .87 X .06 PL
35	713027	4	BLT-HH 5/16-18 X 1 #5
36	713042	4	BLT-HH 3/8-16 X 1 #5
37	740821	1	ACTUATOR-2.75", 600 LBF
38	742709-4	1	ES2832 PUMP ASSEMBLY
39	744151	1	TRANSAXLE 18" 36V
40	809148	2	RETAINING RING - "E" TYPE EXT .75
41	827110	2	CASTER 5-INCH
42	828490	1	CRIMP CLAMP 140R

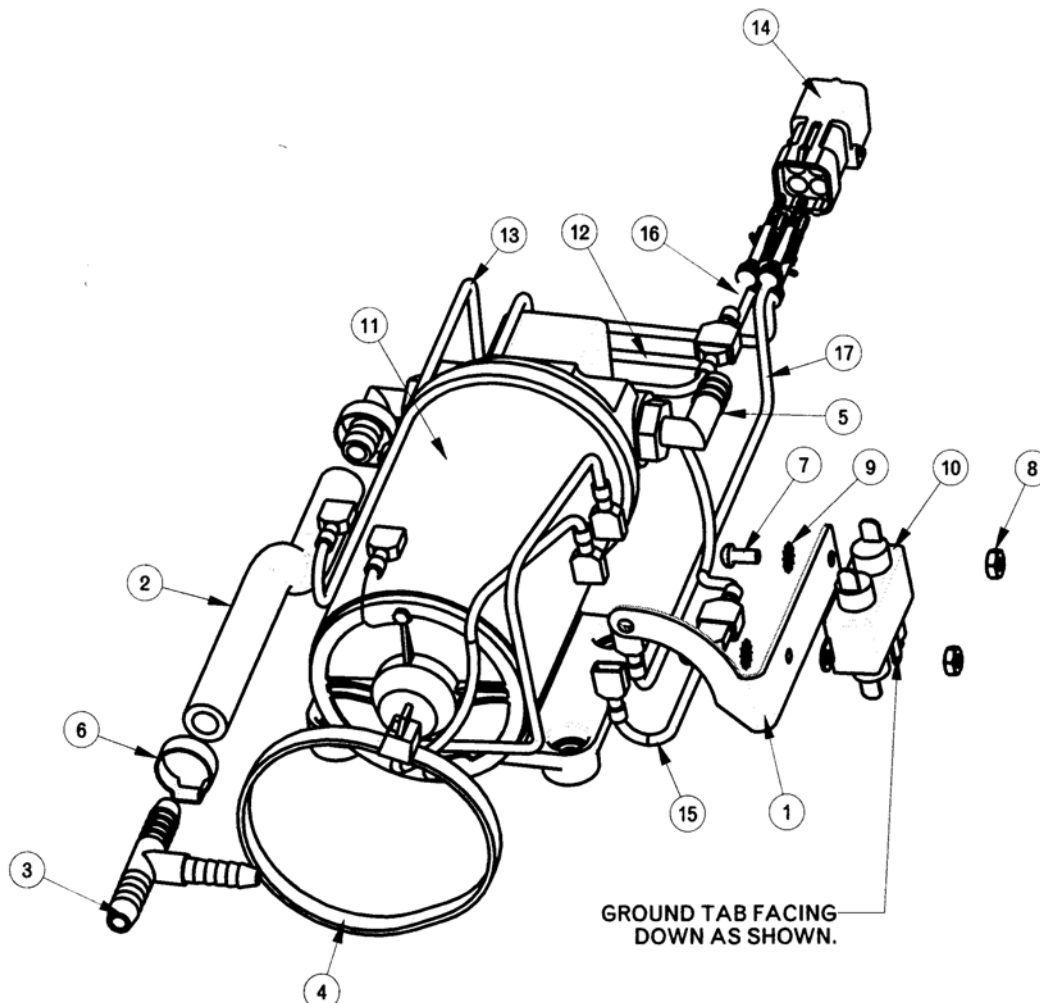
SQUEEGEE LIFT MECHANISM ASSEMBLY

BILL OF MATERIAL 320920			
ITEM	PART NO.	REQ'D	DESCRIPTION
1	210375	1	SWIVEL PIN
2	210391	2	TORSIONAL RETURN SPRING
3	210400	2	SPACER TUBE
4	260041	2	OILITE FLANGE BUSHING
5	320209	2	OILITE FLANGED BEARING
6	320904	1	YOKE WMT, 320 SQUEEGEE MECH
7	320921	1	LIFT MECHANISM WELDMENT
8	710592	2	SCR-MC 1/4-20 X 3.00 SS TH
9	711504	1	WSR-FLAT 1/4 ID SS
10	711671	1	CLEVIS PIN .31X2.13 11-10
11	711808	1	COTTER PIN-HAIR #13
12	712320	2	WSR-NYLON .22 X .45 X .04
13	712536	2	SCR-MC 10-24 X .62 TH SS
14	712562	1	BOLT-HH 1/4-20X3/4 SS
15	712758	1	WSR-HELICAL 1/4 SS



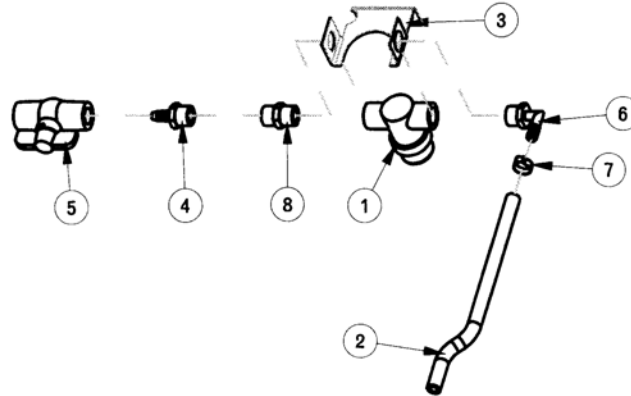
PUMP ASSEMBLY

BILL OF MATERIAL 742709-4 PUMP ASSY			
ITEM	PART NO.	REQ'D	DESCRIPTION
1	281414	1	BRACKET-RFI FILTER
2	320842	1	HOSE 3/8 X 8.5"
3	320917	1	FITTING NYLON TEE 3/8X3/8X1/4
4	361218	1	CABLE TIE, BLACK
5	450040	2	FITTING 90 3/8 MPT X 3/8 BARB
6	450076	2	CRIMP CLAMP SS 185R
7	710328	2	SCR-MC 8-32 X .37 ST PL - ROUND HEAD
8	711304	2	NUT-HEX 8-32 ST PL
9	711562	2	WSR-EXTERNAL LOCK #8
10	742391	1	RFI FILTER
11	742709-3	1	PUMP W/ TERMINALS, SCV
12	747148-1	1	WIRE ASSY GREY/RED 18G 44"
13	747148-2	1	WIRE ASSY GREY/BLACK 18G 44"
14	748029	1	CONNECTOR, PACKARD 4 COND FEMALE
15	748052	1	WIRE ASSY RED 18G 5.5"
16	748053	1	WIRE ASSY BLACK/VIOLET 18G 10"
17	748054	1	WIRE ASSY VIOLET/BLACK 18G 8"

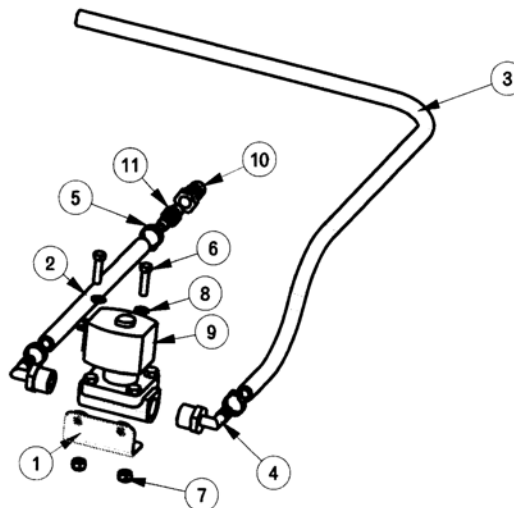


IN-LINE FILTER ASSEMBLY

BILL OF MATERIAL 320990 IN-LINE FILTER ASSY			
ITEM	PART NO.	REQ'D	DESCRIPTION
1	281089	1	FILTER, IN-LINE
2	320848	1	HOSE 3/8 X 12.5"
3	320960	1	PUMP MTG PLATE
4	320991	1	FITTING PP 1/2" MPT X 3/8" HOSE BARB
5	320997	1	BALL VALVE, SHUT OFF 1/2" FPT
6	383327	1	ELBOW 1/2 MPT X 3/8 BARB
7	450076	1	CRIMP CLAMP SS 185R
8	760150	1	FITTING,NIPPLE 1/2" MPT NYLON



BILL OF MATERIAL 320843 SOLENOID SUB ASSY			
ITEM	PART NO.	REQ'D	DESCRIPTION
1	320775	1	SOLENOID MOUNT BRACKET
2	320799	1	ES2832 SPRAY BAR HOSE
3	320845	1	HOSE 3/8 X 35"
4	383327	2	ELBOW 1/2 MPT X 3/8 BARB
5	450076	3	CRIMP CLAMP SS 185R
6	711207	2	BLT-HH 1/4-20 X 1.00 STPL
7	711373	2	NUT-NYLOC 1/4-20
8	711544	2	WSR-HELICAL 1/4
9	742718-1	1	SOLENOID VALVE 36V
10	828368	1	MALE COUPLER
11	828952	1	FITTING PP 1/4" MPT X 3/8" HOSE BARB



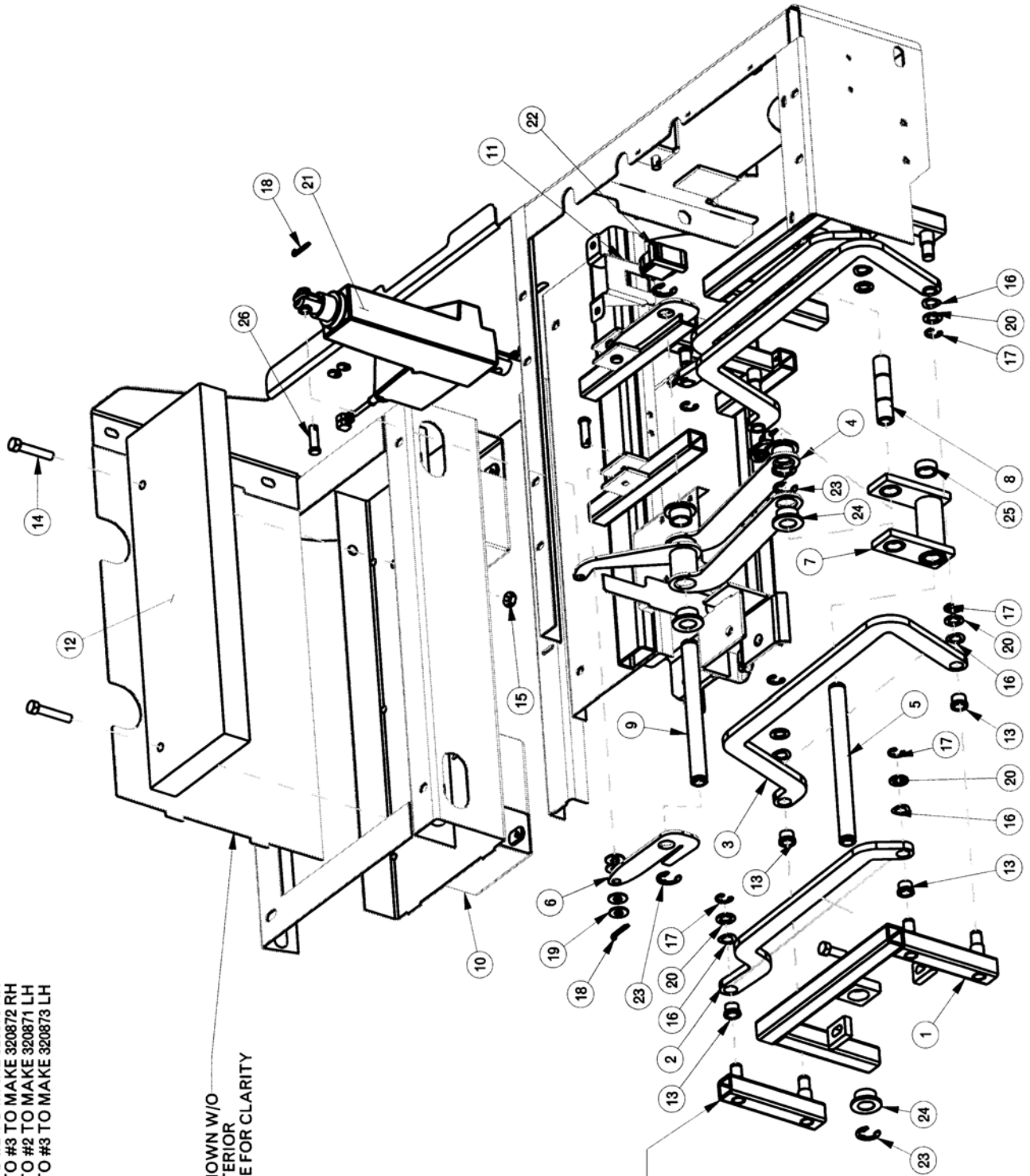
MAINFRAME ASSEMBLY

NOTE:

1. #13 IS PRESSED INTO #2 TO MAKE 320870 RH
2. #13 IS PRESSED INTO #3 TO MAKE 320872 RH
3. #13 IS PRESSED INTO #2 TO MAKE 320871 LH
4. #13 IS PRESSED INTO #3 TO MAKE 320873 LH

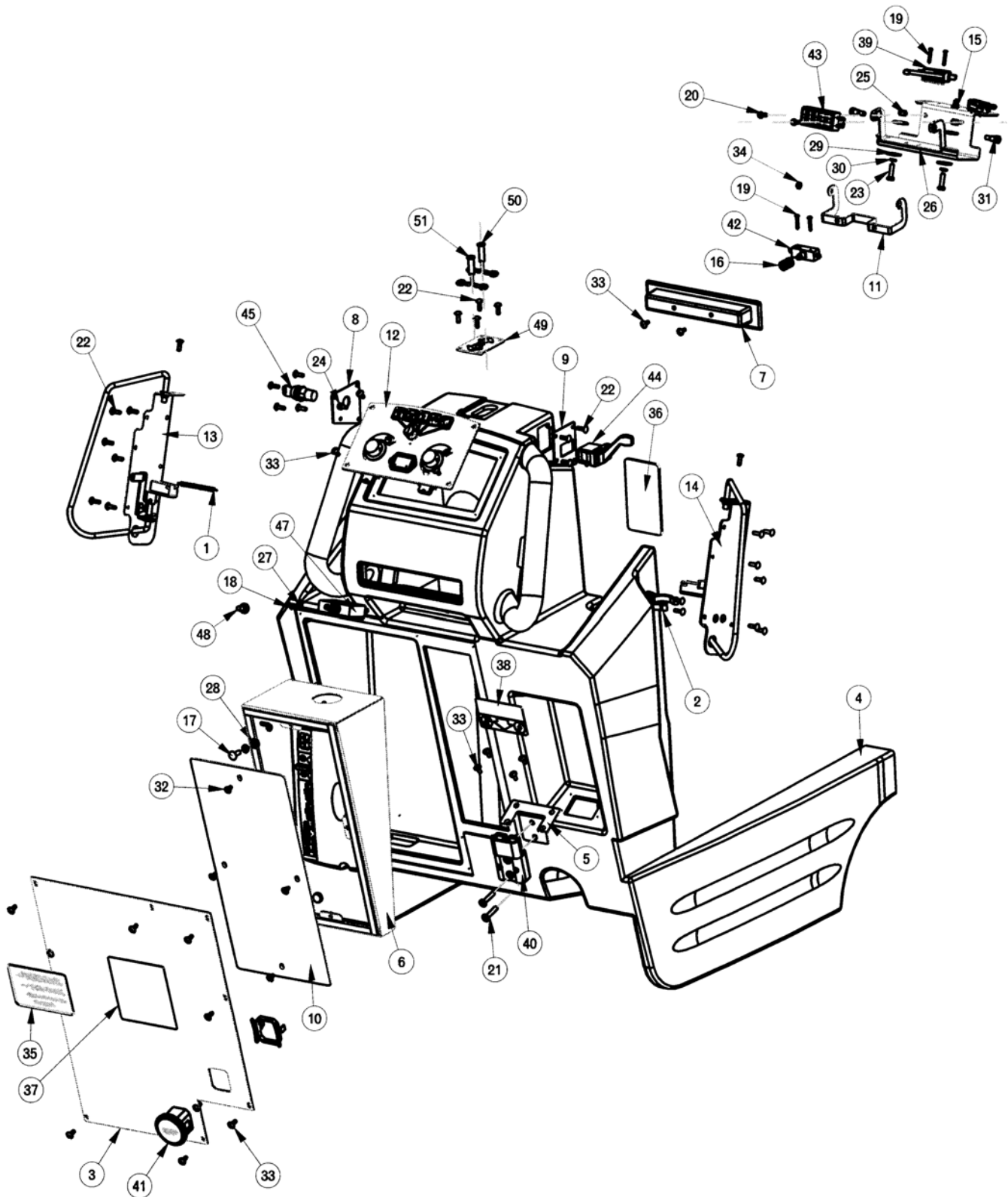
MAINFRAME SHOWN W/O
RIGHT SIDE EXTERIOR
THIS WAS DONE FOR CLARITY

COMPONENT
PIECE OF
MAINFRAME
EXPLODED FOR
CLARITY



BILL OF MATERIAL			
ITEM	PART NO.	REQ'D	DESCRIPTION
1	281464	1	LIFT WMT RH
2	281481	2	LINK, UPPER
3	281482	2	LINK, LOWER
4	320782	1	LINKAGE WELDMENT
5	320786	1	DECK PIVOT SHAFT
6	320787	2	LINKAGE PIVOT ARM
7	320792	1	LIFT LINK WELDMENT
8	320794	1	LIFT LINK PIN
9	320796	1	LINKAGE PIVOT SHAFT
10	320810	1	MAINFRAME WELDMENT ES2832
11	320961	1	SWITCH BRK'T ASSY
12	380223	1	COUNTERWEIGHT
13	670117	8	OILITE FLANGED BUSHING
14	711247	2	BLT-HH 3/8-16 X 2.00 ST PL
15	711439	2	NUT-FLANGED WIZZ 3/8-16
16	711524	8	WSR-WAVE .52 X .87 X .01
17	711713	8	RETAINING RING - "E" TYPE EXT .500
18	711812	4	COTTER PIN 5/32 X 1.00
19	712301	8	WSR-FLAT .87 X .38 X .06
20	712310	8	WSR- FLAT .52 X .87 X .06 PL
21	740819	1	ACTUATOR, 4000N
22	747023	1	SWITCH, DPST W/3 POS. PACKARD
23	809148	6	RETAINING RING - "E" TYPE EXT .75
24	832554	5	BUSHING, FLANGE
25	832569	4	BUSHING 3/4"ID 1"OD X 3/8"
26	833833	4	PIN-CLEVIS 3/8 X 1.25

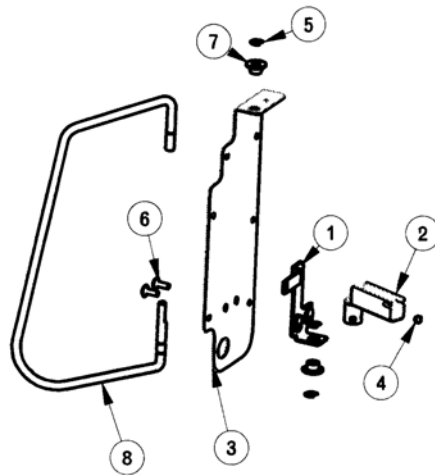
CONTROL CONSOLE ASSEMBLY



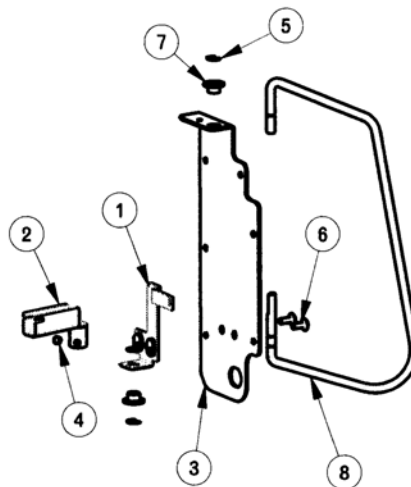
BILL OF MATERIAL			
ITEM	PART NO.	REQ'D	DESCRIPTION
1	220324	2	SPRING
2	260579	1	TOOL CLIP, 1.5" HOSE
3	320756	1	ES2832 E-PANEL TOP
4	320823G	1	ES2832 CONSOLE
5	320829	1	BRACKET, BATT. PLUG
6	320860	1	ES2832 ELECTRICAL BOX SUB-ASM
7	320896	1	BELLY SWITCH COVER
8	320956	1	KEY SWITCH MNTG PLATE ASSY
9	320957	1	DIRECTIONAL MNTG PLATE ASSY.
10	320965	1	ELECTRICAL BOX COVER
11	320969	1	BAIL BRACKET
12	320970	1	ES2832 DASHBOARD ASM
13	320980	1	ES2832 CONTROL BRKT ASSY LH
14	320982	1	ES2832 CONTROL BRKT RH
15	320986	1	SWITCH BRACKET
16	670093	1	SPRING, COMPRESSION
17	710180	4	SCR-MC TR HD 1/4-20x.75 STL ZINC
18	710203	1	SCR-MC 6-32 X .37 ST PL PAN HD
19	710207	6	SCR-MC PAN HD 6-32 x.87 STL ZINC
20	710356	2	SCR-MC 10-32X.62 STPL
21	710383	2	SCR-MC PAN HD 1/4-20 X 1.25 STL
22	711160	28	#10 X 5/8 HI-LO
23	711206	2	BLT-HH 1/4-20 X .87 ST PL
24	711310	7	NUT, HEX 10-32 ST PL
25	711373	2	NUT-NYLOC 1/4-20
26	711430	3	NUT-TINNERMAN TWIN 6-32
27	711502	1	WSR-FLT .170 x.38 x.032 STL ZINC
28	711505	4	WSR-FLAT 1/4
29	711519	4	WSR- FLAT .25 X 1.01 X .06
30	711544	6	WSR-HELICAL 1/4
31	712041	2	BLT- SHLDR 1/4-20 X .44 X .37
32	712540	4	SCR-MC TR HD 10-24 X .37 SS
33	712822	19	SCR-MC 10-24 X .50 TH SS
34	712900	2	NUT-HEX 10-24 STPL
35	715619	1	DECAL, WARNING
36	715628	1	DECAL, BATTERY
37	715904	1	DECAL, DIAGNOSTIC CODES
38	715905	1	DECAL, EMERGENCY DISCONNECT
39	740128	2	SWITCH, SNAP SPST NC
40	740147	1	CB 175 GRAY HOUSING
41	740539	1	HOUR METER 10 - 80 VDC
42	742472	1	SWITCH
43	744005	1	TERMINAL BLOCK EAGLE 3
44	747015	1	SWITCH, SPDT DIRECTION ES28322
45	747024	1	KEYSWITCH, SPST ES2832 SOLDER
46	747100	1	ES2832 MAIN WIRE HARNESS
47	748012	1	CIRCUIT BREAKER 100A
48	748032	1	CIRCUIT BREAKER, BOOT FOR 748012
49	320958SP	1	DIRECTIONAL INDICATOR PLATE (SP)
50	747016-2	1	LED ASSY AMBER
51	747016-1	1	LED ASSY RED

CONTROL BRACKET ASSEMBLY

BILL OF MATERIAL 320980 CONTROL BRKT ASSY LH			
ITEM	PART NO.	REQ'D	DESCRIPTION
1	320821	1	ES2832 CONTROL ARM BRKT ASSY LH
2	320825	1	CAM WELDMENT
3	320979	1	ES2832 CONTROL BRKT LH
4	711004	1	SK-CUP PT 1/4-20 X .25 STL BLACK
5	711721	3	RET RING-E TYPE .312
6	712822	2	SCR-MC 10-24 X .50 TH SS
7	829052	2	BUSHING FLANGED NYLON .312 ID
8	200181CTD	1	HANDLE WIRE COATED

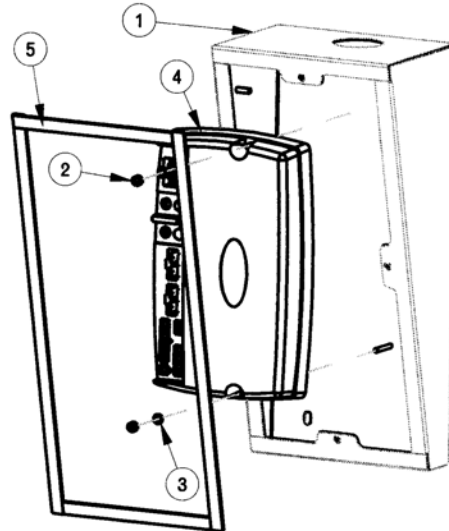


BILL OF MATERIAL 320982 CONTROL BRKT ASSY RH			
ITEM	PART NO.	REQ'D	DESCRIPTION
1	320822	1	ES2832 CONTROL ARM BRKT ASSY, RH
2	320825	1	CAM WELDMENT
3	320981	1	ES2832 CONTROL BRKT RH
4	711004	1	SK-CUP PT 1/4-20 X .25 STL BLACK
5	711721	3	RET RING-E TYPE .312
6	712822	2	SCR-MC 10-24 X .50 TH SS
7	829052	2	BUSHING FLANGED NYLON .312 ID
8	200181CTD	1	HANDLE WIRE COATED

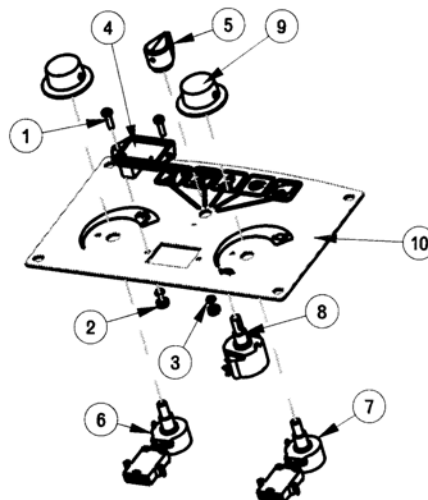


ELECTRICAL BOX SUB-ASSEMBLY & DASHBOARD ASSEMBLY

BILL OF MATERIAL 320860 ELECTRICAL BOX SUB-ASM			
ITEM	PART NO.	REQ'D	DESCRIPTION
1	320861	1	ELECTRICAL BOX BASE
2	711372	2	NUT-NYLOC 8-32 STL ZINC
3	711502	2	WSR-FLT .170 x.38 x.032 STL ZINC
4	747010	1	CONTROLLER- 36 VDC 50A
5	830557	3.75FT	DORTITE 1/2" RM 1F

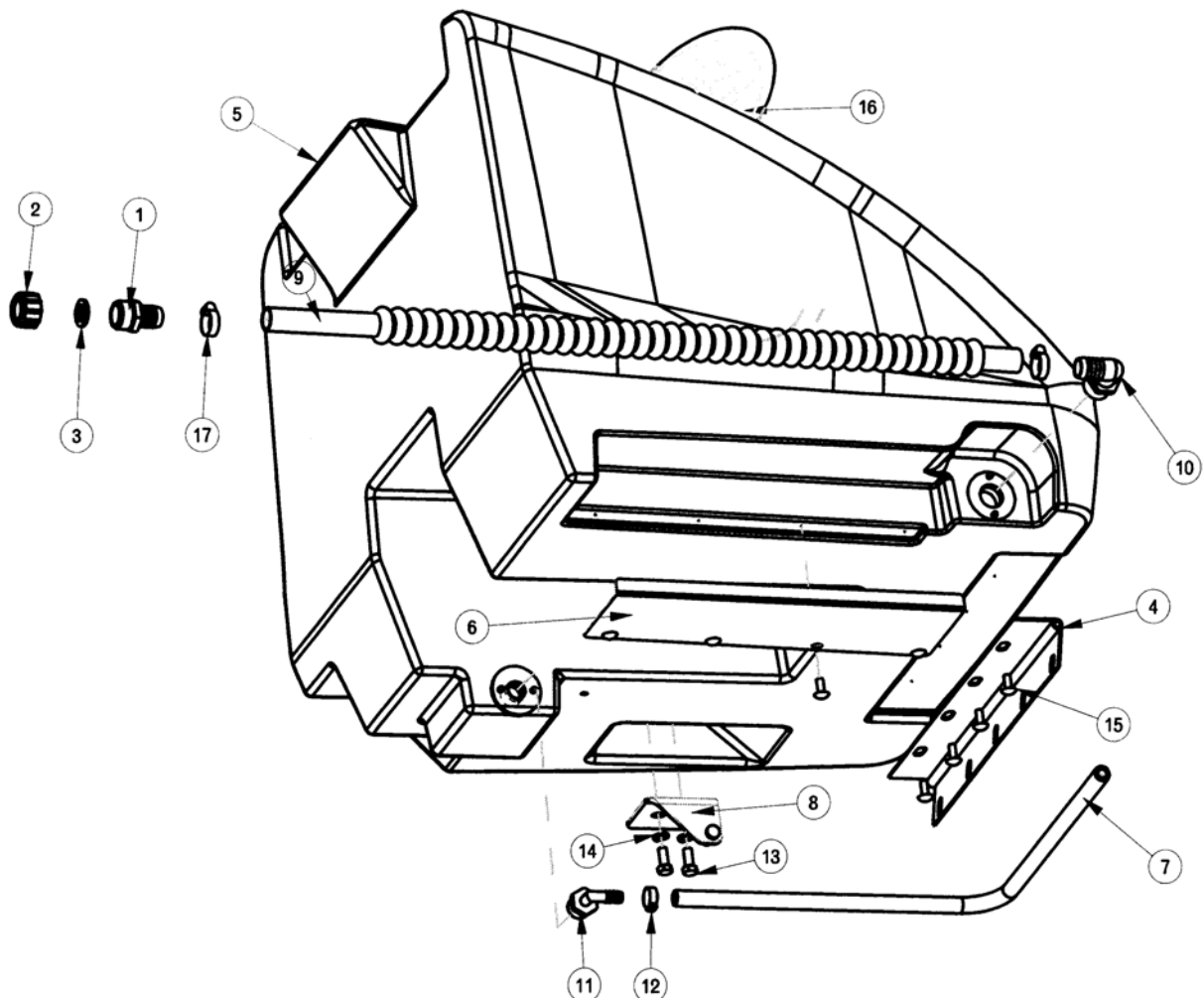


BILL OF MATERIAL 320970 DASHBOARD ASM			
ITEM	PART NO.	REQ'D	DESCRIPTION
1	710204	2	SCR-MC 6-32 X .50 ST PL PAN HD
2	711301	2	NUT-HEX 6-32 ST PL
3	711541	2	WSR-HELICAL #6 ST PL
4	747011-1	1	BATT GAUGE ASSY TRUE CHARGE 36V
5	747020	1	KNOB-MODE SELECTOR
6	747025	1	POTENTIOMETER ASSY WATER FLOW
7	747026	1	POTENTIOMETER ASSY SPEED CONTROL
8	747027	1	SWITCH ASSY, MODE SELECTOR
9	809874	2	KNOB, SPEED CONTROL
10	320866SP	1	DASHBOARD SCREEN PRINTED

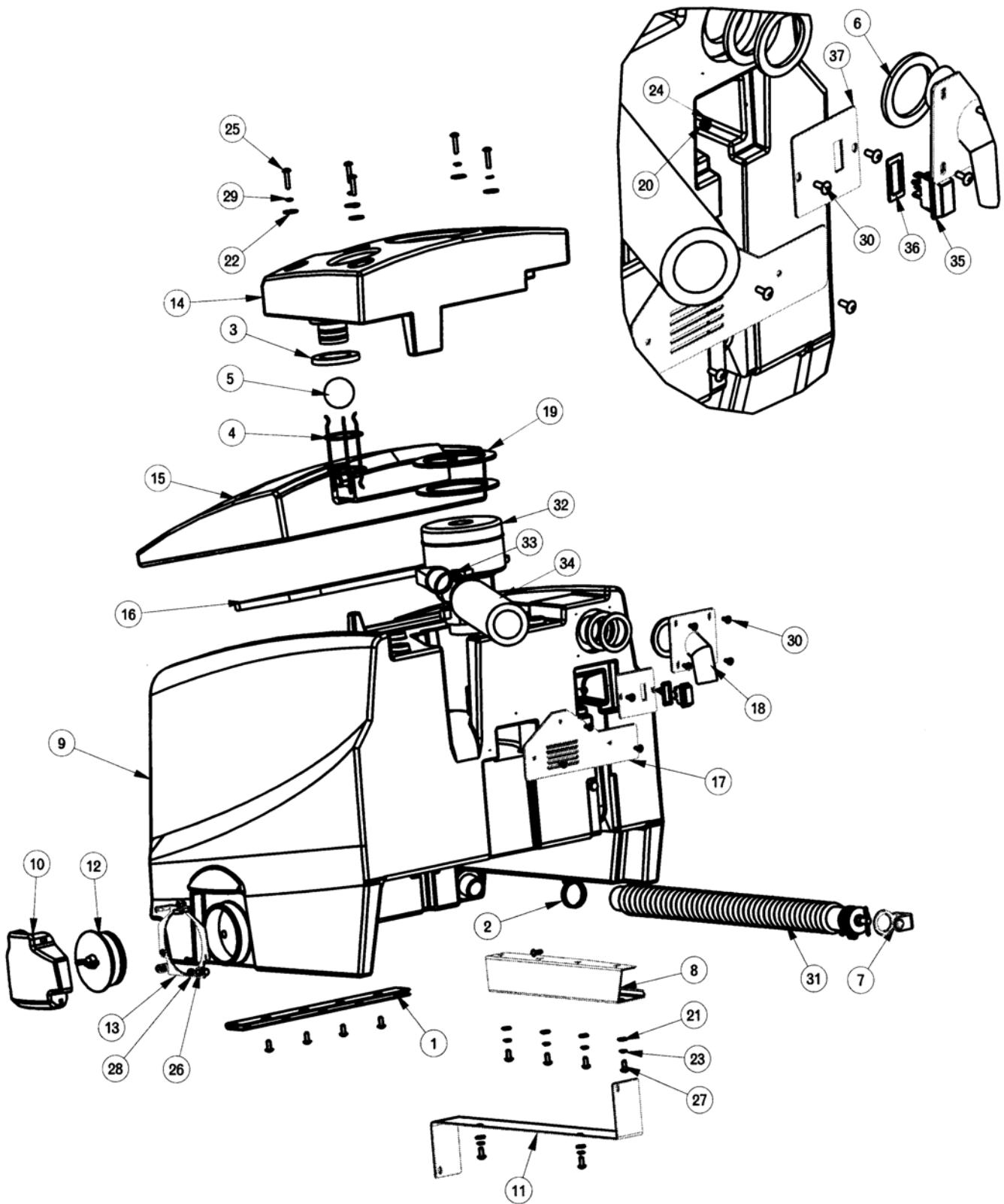


SOLUTION TANK ASSEMBLY

BILL OF MATERIAL SOLUTION TANK			
ITEM	PART NO.	REQ'D	DESCRIPTION
1	200022	1	3/4" MGHT X HOSE BARB
2	200023	1	GARDEN HOSE CAP
3	200024	1	BLACK VINYL WASHER
4	260087	1	HINGE 15"
5	320841	1	ES2832 SOLUTION TANK
6	320844	1	DUMP HOSE SUPPORT PLATE
7	320846	1	HOSE 3/8 X 27"
8	320914	1	SOLUTION TANK BRKT WMT
9	320964	1	SOLUTION DRAIN HOSE 3/4" X 31"
10	383321	1	FITTING PP 90 3/4 MPT 3/4 BARB
11	383327	1	ELBOW 1/2 MPT X 3/8 BARB
12	450076	1	CRIMP CLAMP SS 185R
13	711228	2	BLT-HH 5/16-18 X .75 ST PL
14	711545	2	WSR-HELICAL 5/16
15	712565	8	SCR-MC 1/4-20X.63 SS TR HD
16	715803	1	DECAL, CP 2832
17	829129	2	HOSE CLAMP MICRO-SEAL



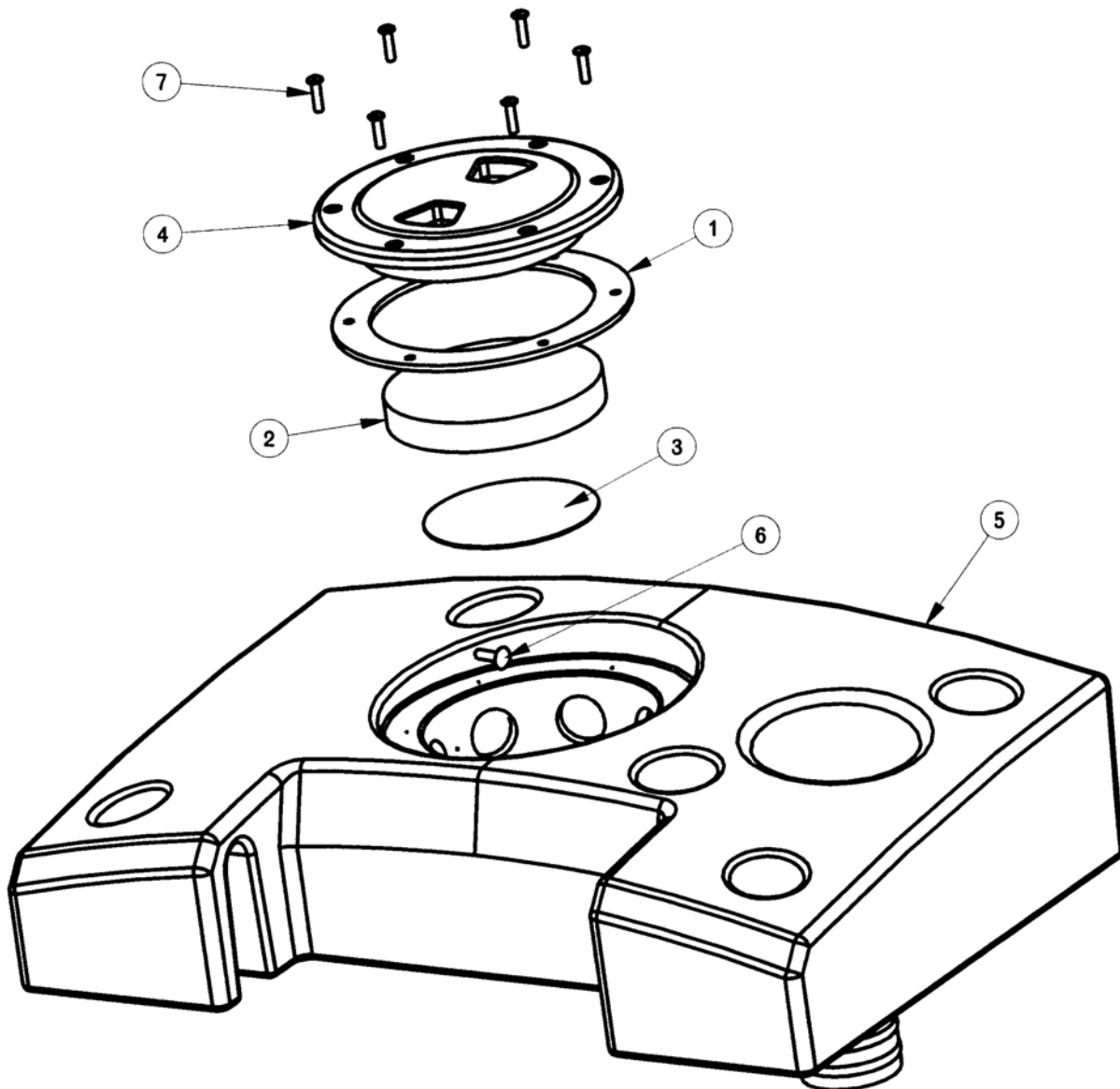
RECOVERY TANK ASSEMBLY



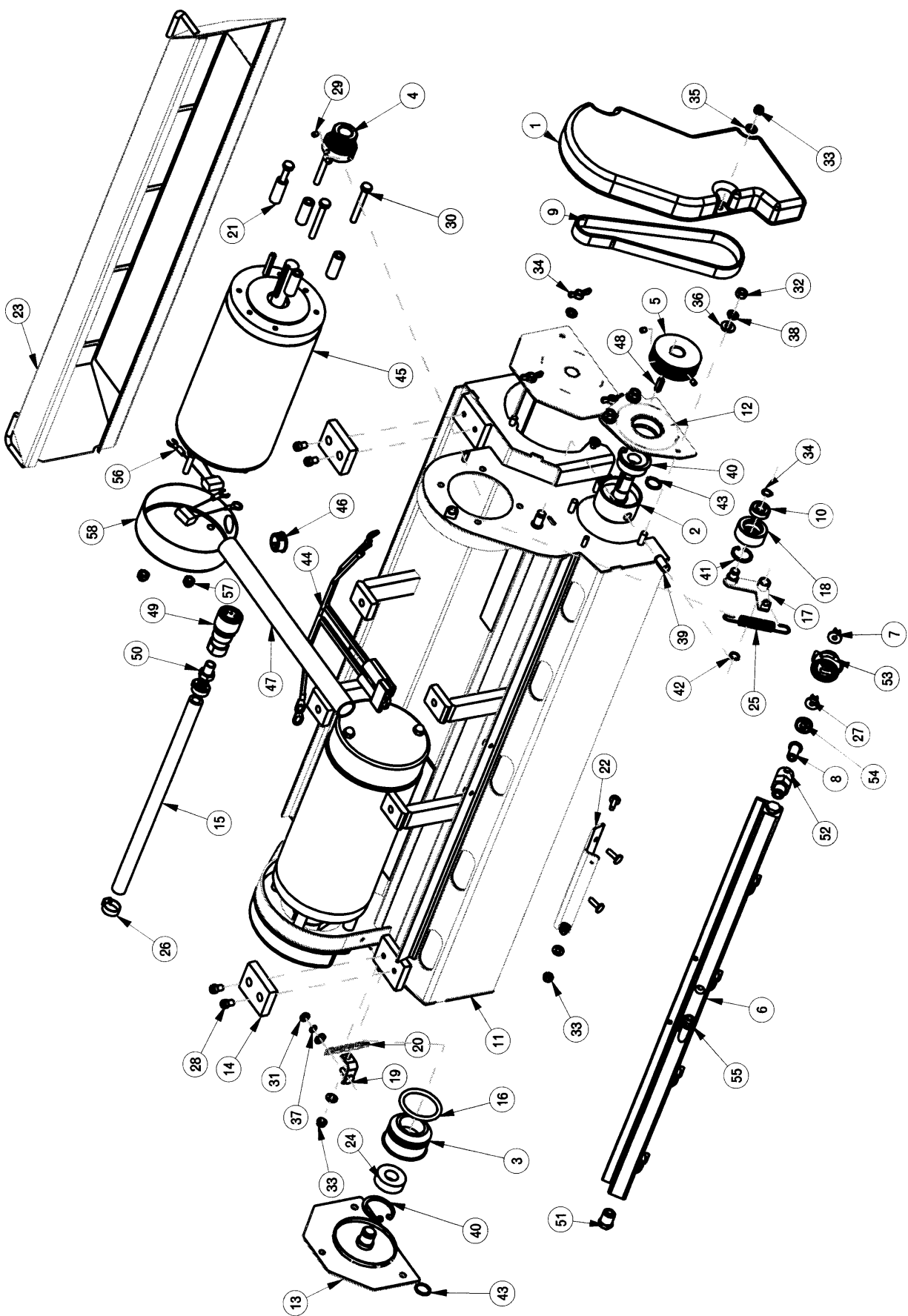
BILL OF MATERIAL RECOVERY TANK			
ITEM	PART NO.	REQ'D	DESCRIPTION
1	260087	1	HINGE 15"
2	260203	1	WIRE GRIP HOSE CLAMP
3	281073	1	INLET GASKET
4	281440	1	FLOAT CAGE, SCV
5	281442	1	FLOAT BALL, SCV
6	281950	3	FLOAT CAGE GASKET
7	320269	1	STRAP, DRAIN PLUG RETAINING
8	320754	1	HOSE SUPPORT BRACKET
9	320831	1	ES2832 RECOVERY TANK
10	320835	1	ES2832 DUMP CAP COVER
11	320837	1	RETAINER - LARGE
12	320838	1	STOPPER PLUG ASM - 4"
13	320839	1	DUMP COVER SUPPORT RING
14	320850	1	ES2832 FIXED LID ASSY
15	320855	1	ES2832 MOVABLE LID
16	320856	1	ES2832 GASKET, MOVABLE LID
17	320967	1	VAC MOTOR VENT COVER
18	320987	1	INLET PIPE ASSY ES2832
19	380035	2	MOTOR GASKET
20	711310	1	NUT, HEX 10-32 ST PL
21	711505	8	WSR-FLAT 1/4
22	711519	5	WSR- FLAT .25 X 1.01 X .06
23	711544	8	WSR-HELICAL 1/4
24	711553	1	WSR- INTERNAL LOCK #10
25	712138	5	SCR-MC 1/4-20 X 1.25 TRUSS PL SS
26	712536	2	SCR-MC 10-24 X .62 TH SS
27	712565	12	SCR-MC 1/4-20X.63 SS TR HD
28	712638	2	NUT, HEX 10-24 SS NYLOC
29	712758	5	WSR-HELICAL 1/4 SS
30	712822	12	SCR-MC 10-24 X .50 TH SS
31	200289	1	DUMP HOSE ASSY
32	742772-1	1	VACUUM ASSY
33	760859	1	CLAMP, HOSE
34	320836	1	MUFFLER, VAC MOTOR
35	742716	1	SWITCH DREEFS 1 POLE ON-OFF
36	748035	1	ROCKER SWITCH GASKET
37	320828	1	HOSE FITTING PLATE ASSY.

FIXED LID ASSEMBLY

BILL OF MATERIAL 320850 FIXED LID ASSY			
ITEM	PART NO.	REQ'D	DESCRIPTION
1	281018	1	GASKET, NEO 6.00 X 4.50 X .125
2	281055	1	VAC MOTOR FILTER
3	281056	1	VAC MOTOR INLET SCREEN
4	281423	1	FILL CAP W/CHAIN ASSY 4.00
5	320851	1	ES2832 FIXED LID
6	711160	1	#10 X 5/8 HI-LO
7	712516	6	SCR-BHCS #8-32 x .62 SS

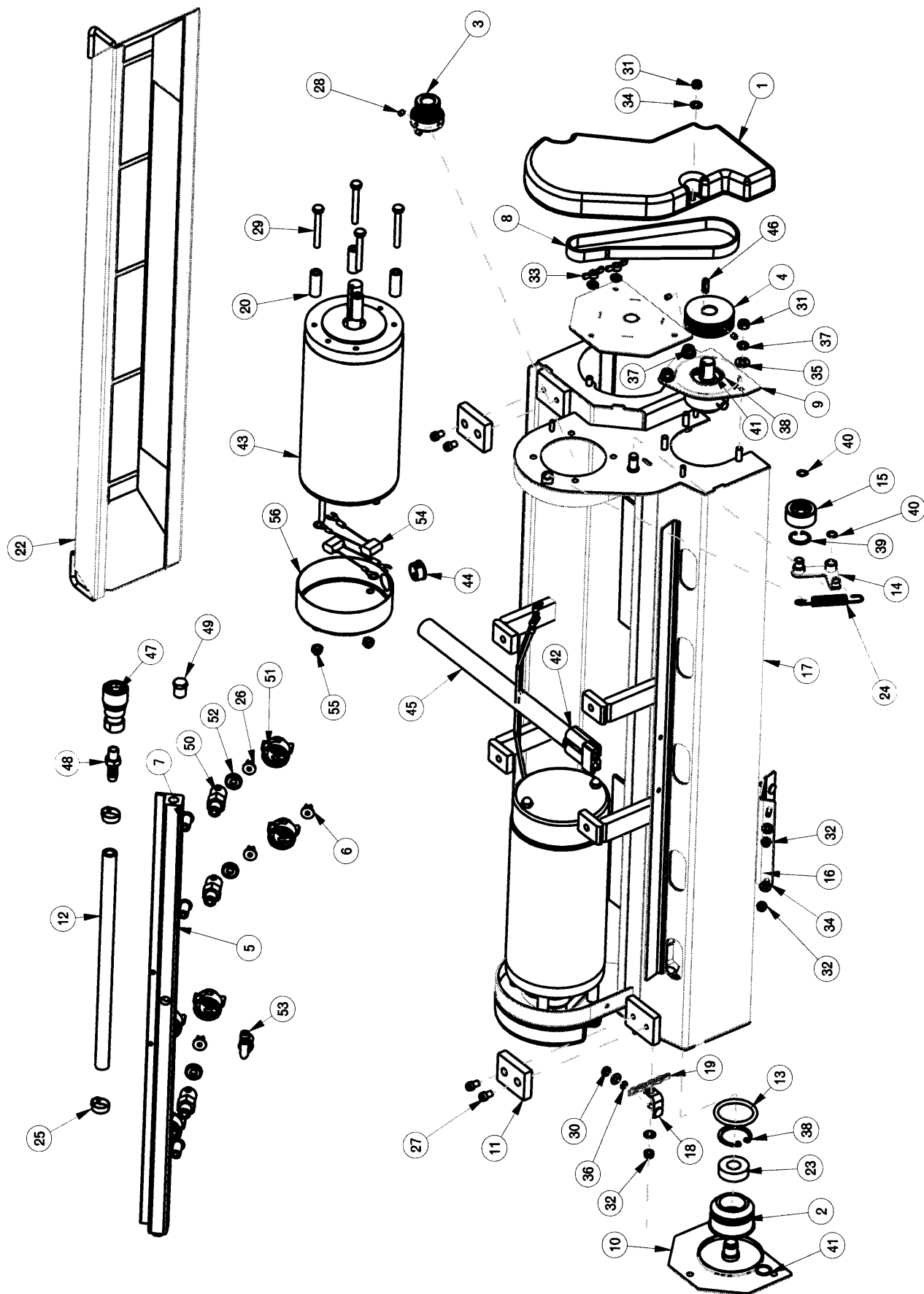


28" CYLINDRICAL SCRUB DECK ASSEMBLY



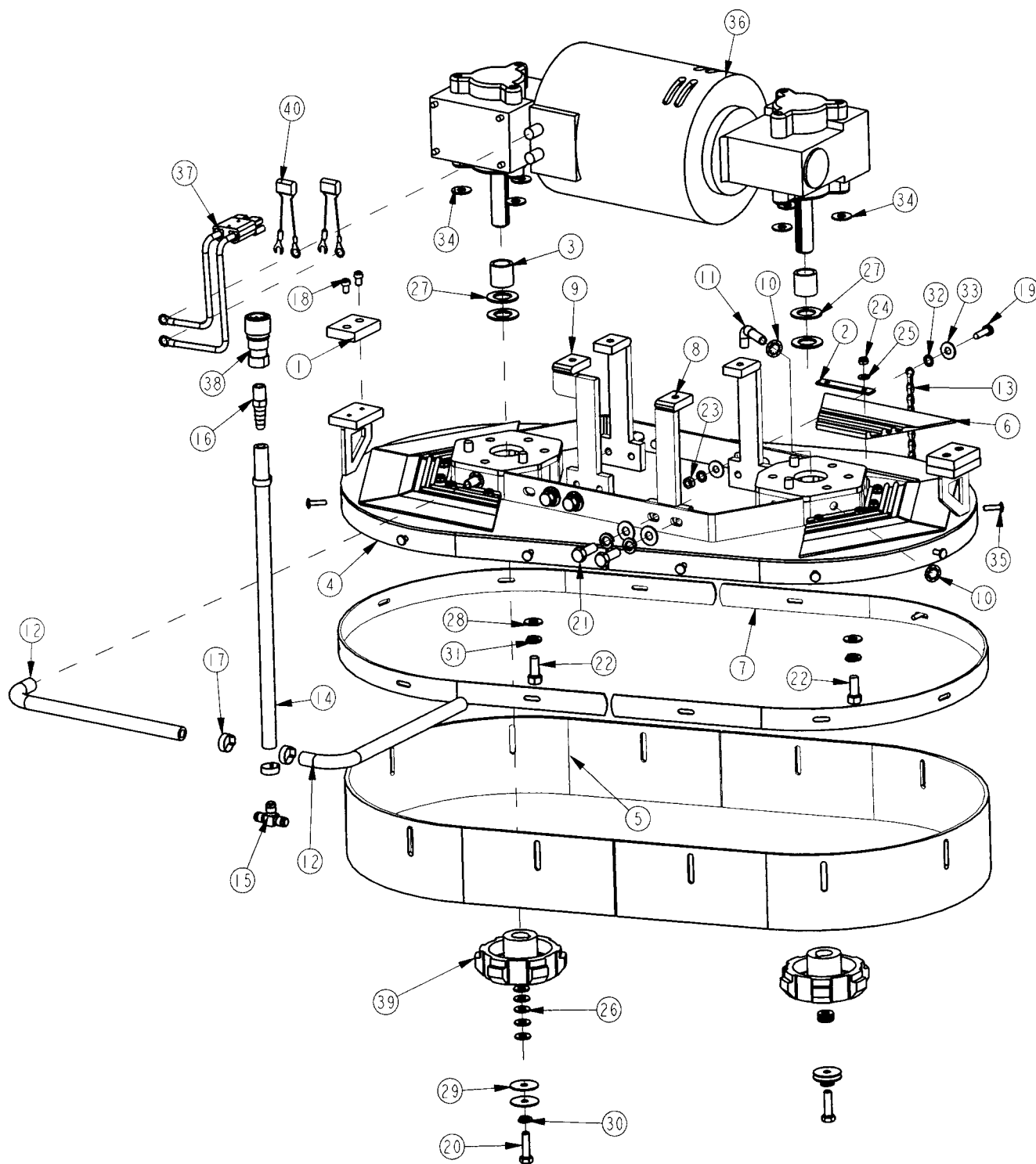
BILL OF MATERIAL 281501			
ITEM	PART NO.	REQ'D	DESCRIPTION
1	281023	2	BELT COVER, CYLINDRICAL SCRUBDECK
2	281034	2	DRIVE HUB, CYLINDRICAL SCRUBDECK
3	281035	2	IDLE HUB, CYLINDRICAL SCRUBDECK
4	281036	2	OFFSET PULLEY POLY V
5	281037	2	DRIVEN PULLEY
6	281038	1	SPRAY BAR
7	281040	3	SPRAY TIP 11005
8	281041	5	CHECK VALVE
9	281053	2	J BELT (POLY V) 18"
10	281058	2	BEARING 3/8" RADIAL
11	281502	1	28" CYLINDRICAL SCRUBDECK WELDMENT
12	281505	2	BRUSH DRIVE HUB WMT
13	281512	2	IDLE SHAFT WMT
14	281515	2	WEAR PLATE
15	281517	1	SOL FEED HOSE, 28" CYL DECK
16	281519	2	O-RING 1.62 X 2.00 X .188
17	281544	2	TENSIONER ARM WELDMT
18	281548	2	BELT IDLER
19	281557	1	DRAG CHAIN BRK'T, CYL. SCRUBDECK
20	281558	1	DRAG CHAIN, CYL. SCRUBDECK
21	281598	8	MOTOR STANDOFF - CYL SCRUB DECK
22	281606	1	SPRAY HEAD MTG BRKT, 28" & 32" CYLINDRICAL SCRUBDECKS
23	281901	1	DEBRIS BOX WMT, CYLINDRICAL SCRUBDECK
24	383582	4	BALL BEARING, RADIAL 5/8"
25	430051	2	RETURN SPRING-3.00"
26	450076	2	CRIMP CLAMP SS 185R
27	450122	2	UNIJET SPRAY TIP 6503
28	710961	4	SCR-SC 1/4-20 X .37
29	711003	8	SCR-SK 10-32 x .25
30	711214	8	BLT-HH 1/4-20 X 2.00
31	711310	1	NUT, HEX 10-32 ST PL
32	711316	8	NUT-HEX 1/4-20 ST PL
33	711350	10	NUT NYLOC 10-32
34	711389	6	NUT-WING 1/4-20 STL ZINC
35	711503	9	WSR, FLAT#10
36	711505	6	WSR-FLAT 1/4
37	711543	1	WSR - HELICAL #10
38	711544	12	WSR-HELICAL 1/4
39	711676	4	ROLL PIN, 3/8 x 3/4
40	711701	4	RETAINING RING, INT 1.37
41	711704	2	INTERNAL RETAINING RING N5000-86 .875 DIA.
42	711724	3	3/8" RETAINING RING, EXTERNAL
43	711725	4	5/8" RETAINING RING, EXTERNAL
44	748046	1	WIRE ASSY, BRUSH DECK CYLINDER
45	748048	2	MOTOR 1 HP, 36V, 1800RPM
46	748122	2	BUSHING, HEYCO 2103 I.D .625.
47	748141	1	CABLE WRAP, 11"
48	760043	2	KEY, 3/16 X .675 L
49	828370	1	1/4 NPT SOCKET FEMALE END COUPLI
50	828952	1	FITTING PP 1/4" MPT X 3/8" HOSE BARB
51	829619	2	END PLUG
52	833140	5	BODY INLET CONNECTOR
53	833141	5	CAP
54	833142	5	GASKET CAP
55	833325	1	FITTING NYLON 90 1/4MPT X 3/8HB
56	744016-1	4	CAP .15 MICROFARAD 5/16R-1/4FORK
57	711352	4	NUT ACORN 1/4-20 ST
58	748048-2	2	COVER, MOTOR TERMINAL REPLACEMENT

32" CYLINDRICAL SCRUB DECK ASSEMBLY



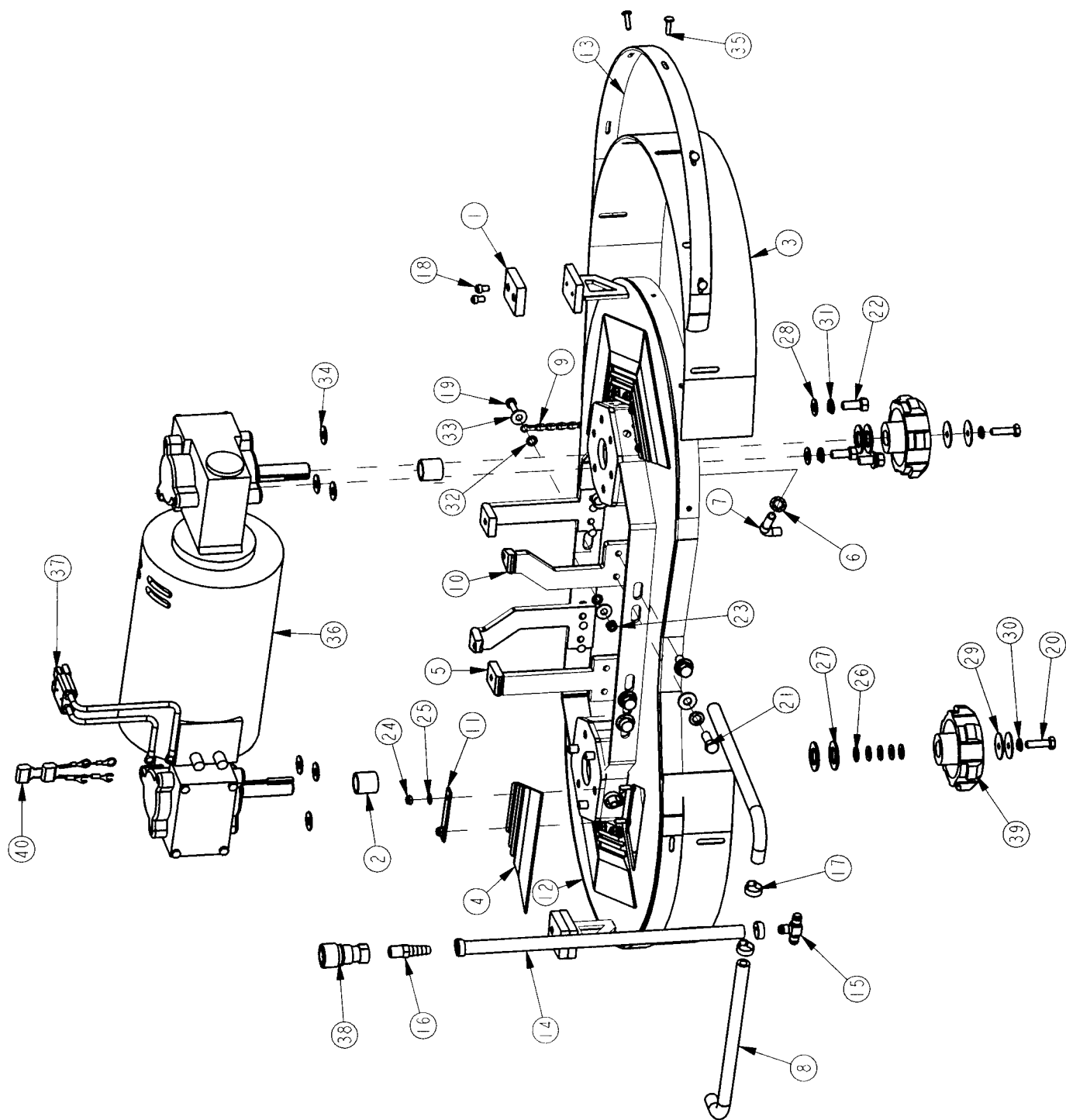
BILL OF MATERIAL 281551			
ITEM	PART NO.	REQ'D	DESCRIPTION
1	281023	2	BELT COVER, CYLINDRICAL SCRUBDECK
2	281035	2	IDLE HUB, CYLINDRICAL SCRUBDECK
3	281036	2	OFFSET PULLEY POLY V
4	281037	2	DRIVEN PULLEY
5	281038	1	SPRAY BAR
6	281040	3	SPRAY TIP 11005
7	281041	5	CHECK VALVE
8	281053	2	J BELT (POLY V) 18"
9	281503	2	BRUSH DRIVE HUB ASSY
10	281512	2	IDLE SHAFT WMT
11	281515	2	WEAR PLATE
12	281517	1	SOL FEED HOSE, 28" CYL DECK
13	281519	2	O-RING 1.62 X 2.00 X .188
14	281544	2	TENSIONER ARM WELDMT
15	281547	2	IDLER SUB ASSY
16	281549	1	BRKT, SPRAY BAR
17	281552	1	32" CYLINDRICAL SCRUBDECK WELDMENT
18	281557	1	DRAG CHAIN BRK'T, CYL. SCRUBDECK
19	281558	1	DRAG CHAIN, CYL. SCRUBDECK
20	281598	8	MOTOR STANDOFF - CYL SCRUB DECK
21	281606	1	SPRAY HEAD MTG BRKT
22	281906	1	DEBRIS BOX WMT, CYLINDRICAL SCRUBDECK 32"
23	383582	2	BALL BEARING, RADIAL 5/8"
24	430051	2	RETURN SPRING-3.00"
25	450076	2	CRIMP CLAMP SS 185R
26	450122	2	UNIJET SPRAY TIP 6503
27	710961	4	SCR-SC 1/4-20 X .37
28	711003	8	SCR-SK 10-32 x .25
29	711214	8	BLT-HH 1/4-20 X 2.00
30	711310	1	NUT, HEX 10-32 ST PL
31	711316	8	NUT-HEX 1/4-20 ST PL
32	711350	10	NUT NYLOC 10-32
33	711389	6	NUT-WING 1/4-20 STL ZINC
34	711503	9	WSR, FLAT#10
35	711505	6	WSR-FLAT 1/4
36	711543	1	WSR - HELICAL #10
37	711544	12	WSR-HELICAL 1/4
38	711701	2	RETAINING RING, INT 1.37
39	711704	2	INTERNAL RETAINING RING N5000-86 .875 DIA.
40	711724	3	3/8" RETAINING RING, EXTERNAL
41	711725	2	5/8" RETAINING RING, EXTERNAL
42	748046	1	WIRE ASSY, BRUSH DECK CYLINDER
43	748048	2	MOTOR 1 HP, 36V, 1800RPM
44	748122	2	BUSHING, HEYCO 2103 I.D .625.
45	748141	1	CABLE WRAP, 11"
46	760043	2	KEY, 3/16 X .675 L
47	828370	1	1/4 NPT SOCKET FEMALE END COUPLI
48	828952	1	FITTING PP 1/4" MPT X 3/8" HOSE BARB
49	829619	2	END PLUG
50	833140	5	BODY INLET CONNECTOR
51	833141	5	CAP
52	833142	5	GASKET CAP
53	833325	1	FITTING NYLON 90 1/4MPT X 3/8HB
54	744016-1	4	CAP .15 MICROFARAD 5/16R-1/4FORK
55	711352	4	NUT ACORN 1/4-20
56	748048-2	2	MOTOR TERMINALS COVER- REPLACEMENT

28" DISC SCRUB DECK ASSEMBLY



BILL OF MATERIAL 281601			
ITEM	PART NO.	REQ'D	DESCRIPTION
1	281515	2	WEAR PLATE
2	281610	6	STRAP, KEEPER
3	281611	2	HUB-SCRUB SPACER TUBE
4	281612	1	DISK SCRUBDECK WMT, 28"
5	281613	2	SKIRT, 28" DISK
6	281614	6	FLAP, DISK
7	281615	2	STRAP, DISK
8	281616	3	DISK MTG BRKT WMT
9	281617	1	DISK OFFSET MTG BRKT WMT
10	281633	4	SPEED NUT - 3/8"
11	281634	2	DISK SOLUTION FEED ASSY
12	281637	2	SOL. FEED END HOSE
13	281644	1	DRAG CHAIN ASSY, DISK SCRUBDECK
14	320253	1	HOSE, SOLUTION VALVE 14"
15	320266	1	FITTING BRASS TEE DBL 3/8 BARB
16	342435	1	FITTING 1/4MPTx3/8HB BRASS
17	450076	4	CRIMP CLAMP SS 185R
18	710961	4	SCR-SC 1/4-20 X .37
19	711206	1	BLT-HH 1/4-20 X .87 ST PL
20	711231	2	BLT-HH 5/16-18X1.25 ST PL
21	711242	8	BLT-HEX 3/8 -16X1.00 ZP
22	711246	6	BLT-HH 3/8-16 X .87 ST PL
23	711316	1	NUT-HEX 1/4-20 ST PL
24	711350	12	NUT NYLOC 10-32
25	711503	12	WSR, FLAT#10
26	711506	10	WSR-FLT .344 X .690 X .062 STL ZINC
27	711512	4	WSR-FLAT .75X1.37X.08
28	711515	6	WSR-FLAT .406 X .812 X .0625
29	711516	4	WSR- FLAT .31 X 1.25 X .05
30	711545	2	WSR-HELICAL 5/16
31	711546	14	WSR-HELICAL 3/8
32	711554	2	WSR-INTERNAL LOCK 1/4 ID
33	711575	2	WSR-FLT .31x.75x.06ST
34	712301	14	WSR-FLAT .87 X .38 X .06
35	712537	12	10-24 X .75 SS TRUSS HD SCR
36	748003	1	DUAL RIGHT ANGLE DRIVE, 28"
37	748077	1	WIRE ASSY, BRUSH DECK DISK
38	828370	1	1/4 NPT SOCKET FEMALE END COUPLI
39	3312402	2	HUB-SCRUB BRUSH DRIVE
40	744016-1	2	CAP .15 MICROFARAD 5/16R-1/4FORK

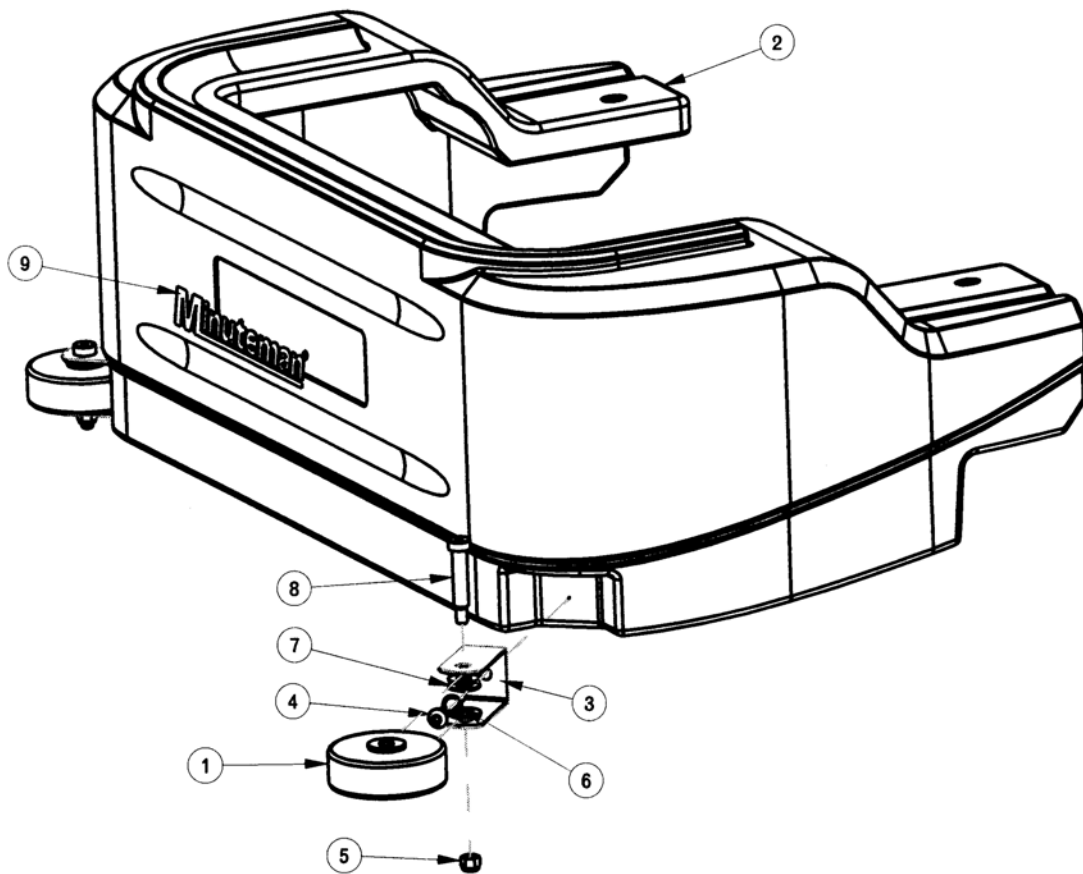
32" DISC SCRUB DECK ASSEMBLY



BILL OF MATERIAL 281651			
ITEM	PART NO.	REQ'D	DESCRIPTION
1	281515	2	WEAR PLATE
2	281611	2	HUB-SCRUB SPACER TUBE
3	281613	2	SKIRT, 28" DISK
4	281614	6	FLAP, DISK
5	281616	2	DISK MTG BRKT WMT
6	281633	2	SPEED NUT - 3/8"
7	281634	2	DISK SOLUTION FEED ASSY
8	281642	2	SOL. FEED END HOSE
9	281644	1	DRAG CHAIN ASSY, DISK SCRUBDECK
10	281657	2	DISK MTG BRKT WMT
11	281660	6	STRAP, KEEPER
12	281662	1	DISK SCRUBDECK WMT, 32"
13	281665	2	STRAP, DISK
14	320253	1	HOSE, SOLUTION VALVE 14"
15	320266	1	FITTING BRASS TEE DBL 3/8 BARB
16	342435	1	FITTING 1/4MPTx3/8HB BRASS
17	450076	6	CRIMP CLAMP SS 185R
18	710961	4	SCR-SC 1/4-20 X .37
19	711206	1	BLT-HH 1/4-20 X .87 ST PL
20	711231	2	BLT-HH 5/16-18X1.25 ST PL
21	711242	8	BLT-HEX 3/8 -16X1.00 ZP
22	711246	6	BLT-HH 3/8-16 X .87 ST PL
23	711316	1	NUT-HEX 1/4-20 ST PL
24	711350	12	NUT NYLOC 10-32
25	711503	12	WSR, FLAT#10
26	711506	10	WSR-FLT .344 X .690 X .062 STL ZINC
27	711512	4	WSR-FLAT .75X1.37X.08
28	711515	6	WSR-FLAT .406 X .812 X .0625
29	711516	4	WSR- FLAT .31 X 1.25 X .05
30	711545	2	WSR-HELICAL 5/16
31	711546	14	WSR-HELICAL 3/8
32	711554	2	WSR-INTERNAL LOCK 1/4 ID
33	711575	2	WSR-FLT .31x.75x.06ST
34	712301	14	WSR-FLAT .87 X .38 X .06
35	712537	12	10-24 X .75 SS TRUSS HD SCR
36	748033	1	MOTOR, 32" DUAL RIGHT ANGLE
37	748077	1	WIRE ASSY, BRUSH DECK DISK
38	828370	1	1/4 NPT SOCKET FEMALE END COUPLI
39	3312402	2	HUB-SCRUB BRUSH DRIVE
40	744016-1	2	CAP .15 MICROFARAD 5/16R-1/4FORK

DECK COVER ASSEMBLY

BILL OF MATERIAL 320972 DECK COVER ASSY 28"			
ITEM	PART NO.	REQ'D	DESCRIPTION
1	320013	2	WHEEL, BUMPER 4"
2	320887G	1	ES2832 DECK COVER 28"
3	320889	2	BRACKET, BUMPER WHEEL
4	710985	2	SCR-SC 3/8-16 X .62 ST PL
5	711380	2	NUT-NYLOC 3/8-16 NUT
6	711555	2	WSR-INTERNAL LOCK 3/8
7	711592	6	WSR NYLON .5 X 1.06 X .06
8	712120	2	BLT- SHLDR 1/2 X 2
9	715385	1	MINUTEMAN LOGO 1.4 X 9.6

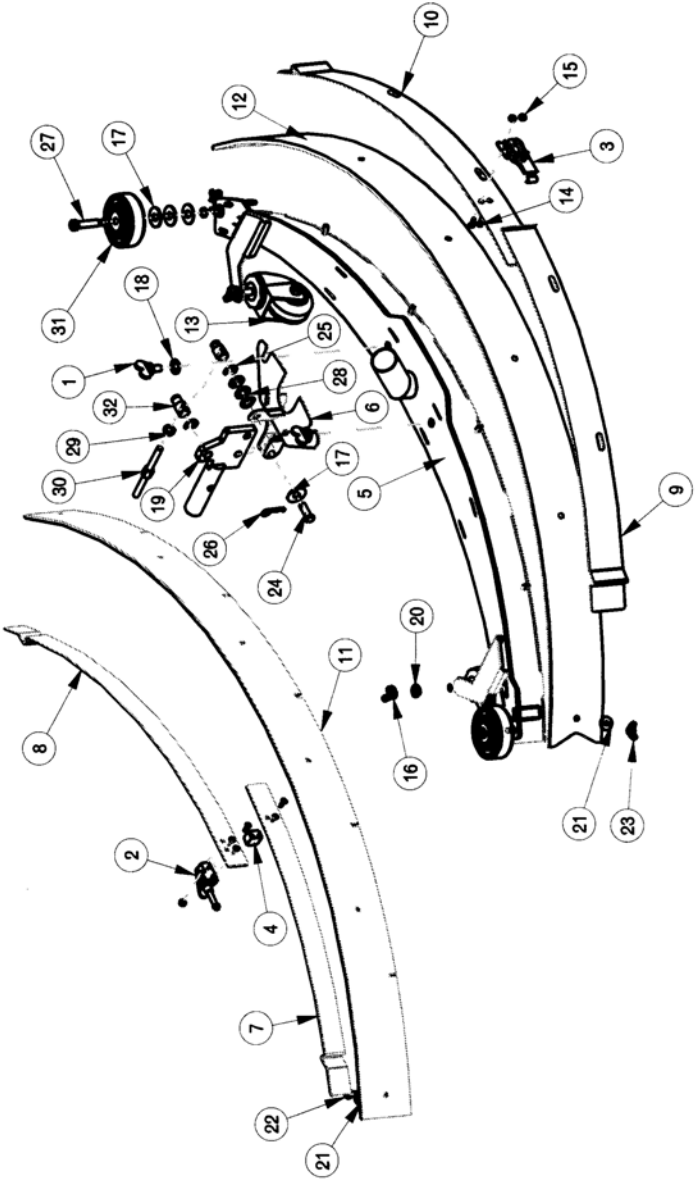


BILL OF MATERIAL 320880 DECK COVER ASSY 32"			
ITEM	PART NO.	REQ'D	DESCRIPTION
1	320013	2	WHEEL, BUMPER 4"
2	320881G	1	ES2832 DECK COVER 32"
3	320889	2	BRACKET, BUMPER WHEEL
4	710985	2	SCR-SC 3/8-16 X .62 ST PL
5	711380	2	NUT-NYLOC 3/8-16 NUT
6	711555	2	WSR-INTERNAL LOCK 3/8
7	711592	6	WSR NYLON .5 X 1.06 X .06
8	712120	2	BLT- SHLDR 1/2 X 2
9	715385	1	MINUTEMAN LOGO 1.4 X 9.6

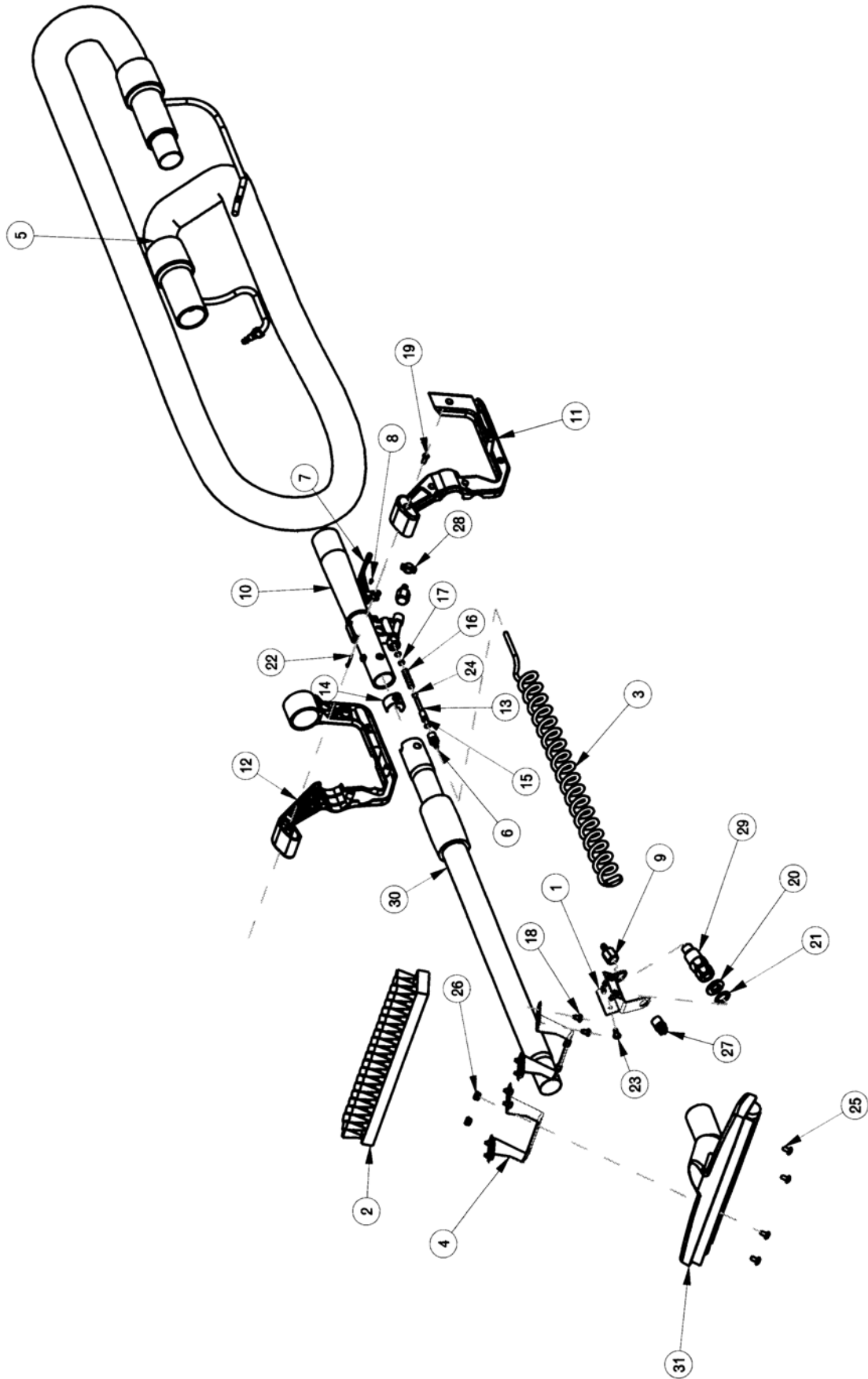
REAR SQUEEGEE ASSEMBLY

BILL OF MATERIAL SQUEEGEE ASSY			
ITEM	PART NO.	REQ'D	DESCRIPTION
1	260267	2	WING BOLT 3/8-16 X .62 ST PL
2	281074	1	SQUEEGEE TOGGLE CLAMP, 2800
3	281075	1	SQUEEGEE LATCH, 2800
4	281740	1	STOP BAR
5	320931	1	NEW SQUEEGEE WMT ASSY, 320
6	320940	1	SQUEEGEE MT BRKT ASSY
7	320946	1	STRAP - FRONT STOP
8	320947	1	STRAP - FRONT CLAMP
9	320948	1	STRAP - REAR CATCH
10	320949	1	STRAP - REAR LATCH
11	320950	1	FRONT BLADE, SQUEEGEE GUM RUBBER, 32"
12	320951	1	REAR BLADE, SQUEEGEE GUM RUBBER, 32"
13	430325	2	CASTER WHEEL 3/8"-16 X 1.500
14	710530	7	SCR-MC FL HD 8-32 X .50 BRS
15	711026	5	NUT, HEX 8-32 NYLOC SS

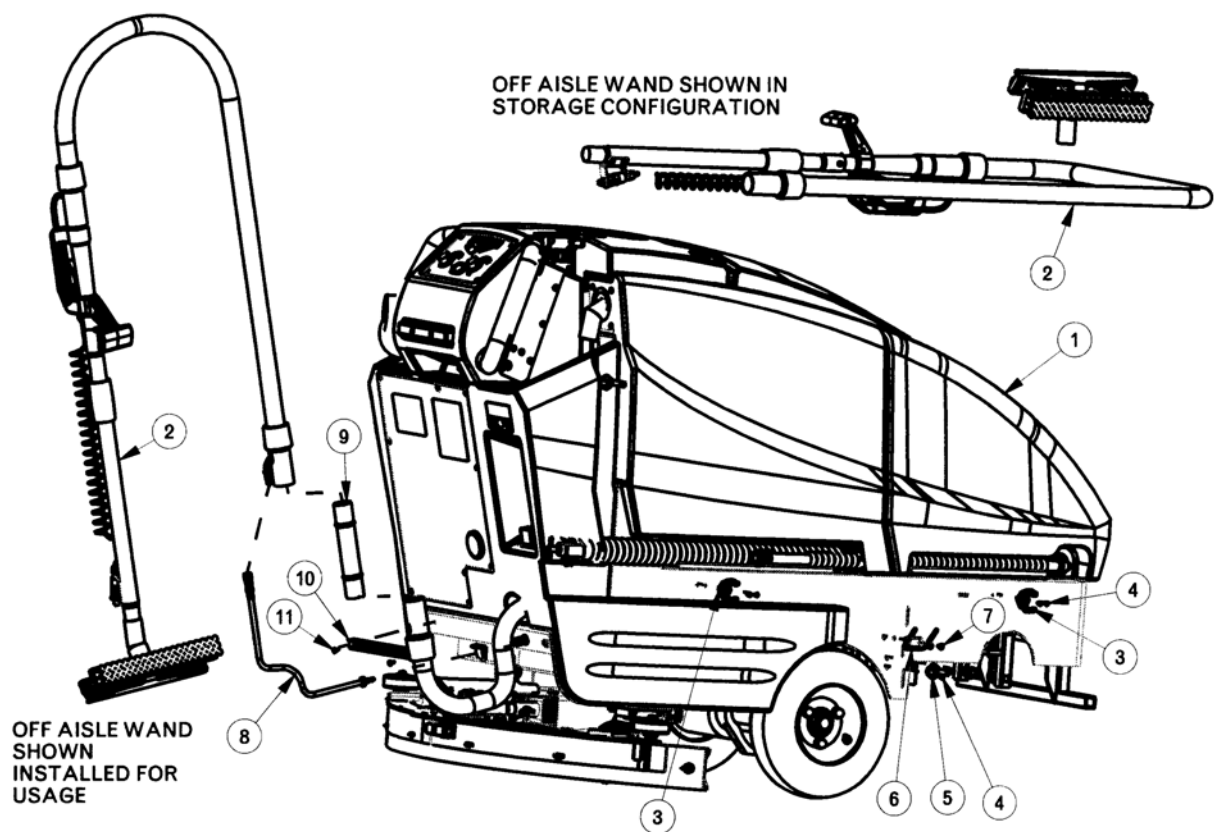
16	711367	2	NUT- WING 3/8-16 ST PL
17	711507	8	WSR-FLAT .37 X 1.12 X .06
18	711515	2	WSR-FLAT .406 X .812 X .0625
19	711524	2	WSR-WAVE .52 X .87 X .01
20	711546	2	WSR-HELICAL 3/8
21	711550	4	WSR NYLON .25 ID X .75 OD
22	711560	2	SCREW-HH 1/4-20X1.00 NYLON
23	711563	2	NUT- WING 1/4-20 NYLON
24	711668	1	CLEVIS PIN, 3/8X1 11-141
25	711713	2	RETAINING RING - "E" TYPE EXT .500
26	711808	1	COTTER PIN-HAIR #13
27	712091	2	SHOULDER BLT 3/8 X 1.50
28	712310	2	WSR- FLAT .52 X .87 X .06 PL
29	712680	1	NUT-HEX 5/16-18 SS
30	750689	1	ADJUSTMENT STUD
31	808829	2	WHEEL,TRUCK
32	762022PLT	1	NUT, ADJUSTING (LH)



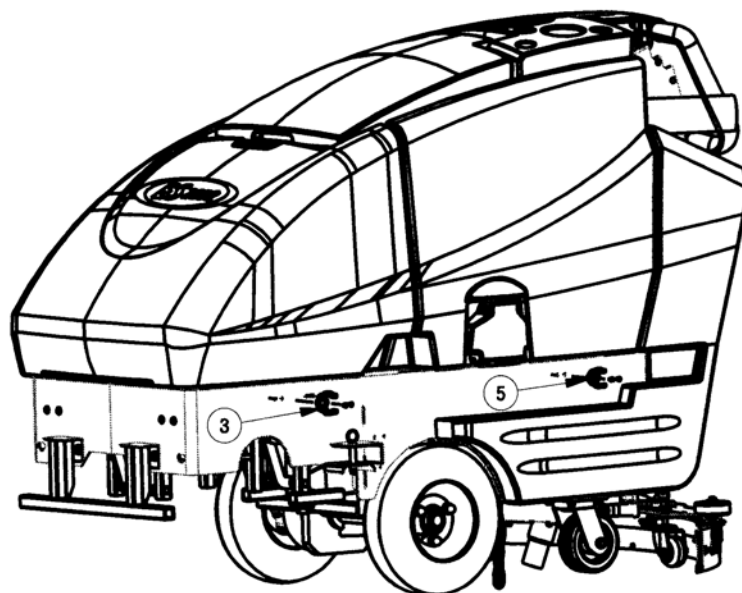
OFF AISLE WAND ASSEMBLY 281071 (optional)



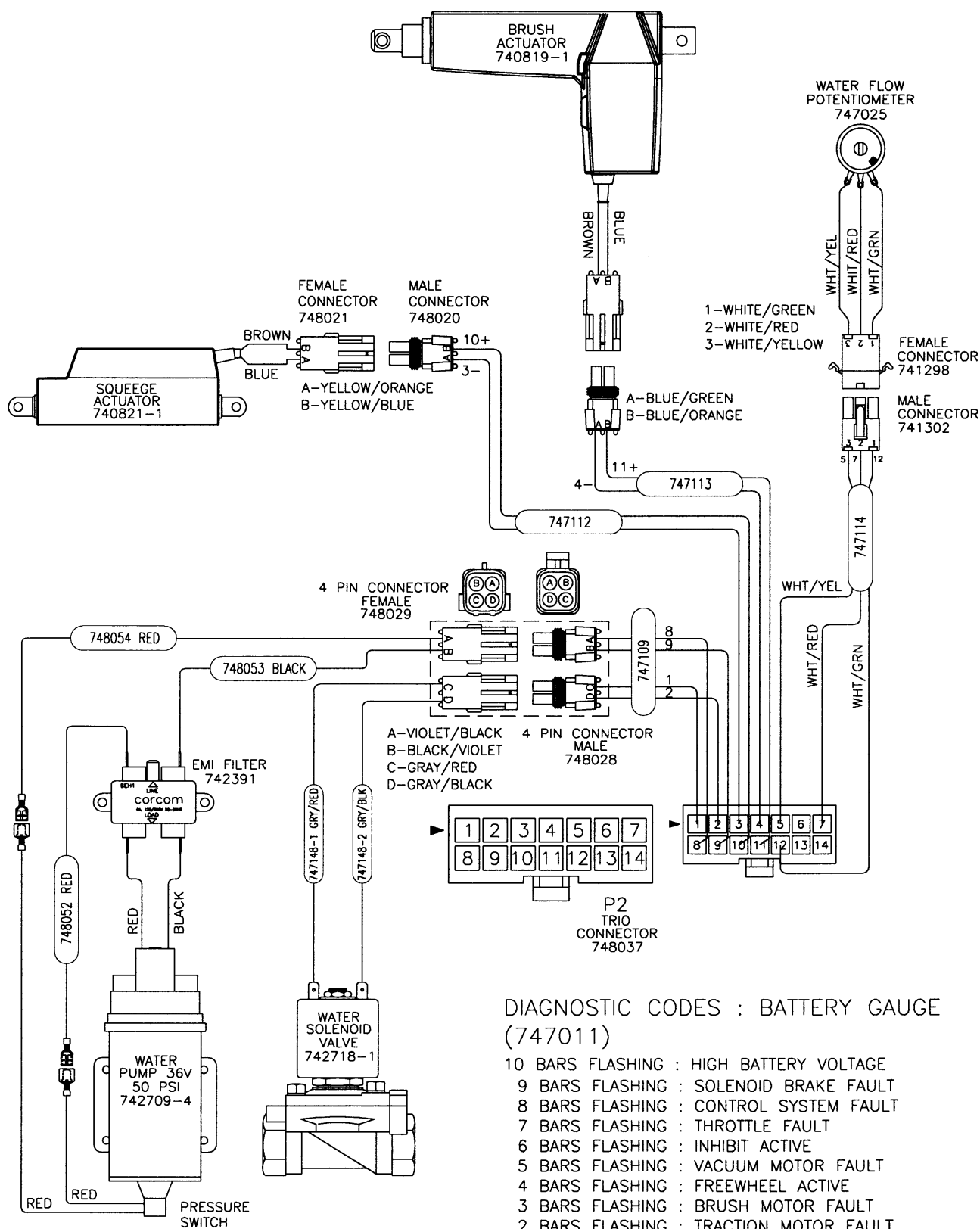
BILL OF MATERIAL 281071			
ITEM	PART NO.	REQ'D	DESCRIPTION
1	100004	1	SPRY JET BKT MC SCRB14GA
2	281044	1	BRUSH 12 X 1.75 X 1.12
3	281045	1	HOSE, SELF-RETRACTING SOLUTION
4	281049	2	BRUSH WAND BRACKET
5	281072	1	HOSE ASSEMBLY, SPRAY/VAC, 2800
6	350280	1	FITTING BRASS 1/8 MPT - 1/8 BARB
7	390053	1	TRIGGER SOL VALVE
8	390063	2	RD HD GRV STUD #2427
9	450218	2	FITTING, BRASS 1/4 FPT, 1/8 BARB
10	450256	1	PICKUP TUBE
11	450257	1	TRIGGER GUARD,LEFT
12	450258	1	TRIGGER GUARD,RIGHT
13	450261	1	VALVE STEM
14	450262	1	LOCKING BUTTON
15	450265	3	O-RING, BROWN
16	450267	1	SPRING SS LC-038D-13
17	450301	1	WASHER, NYLON
18	711116	8	SCR-ST-A 10 X .37 PL
19	711163	5	SCR-HI/LO #10-16 X 1/2
20	711579	1	WSR-FLAT .56 X 1.00 X .100
21	711594	1	WSR-FLAT .56 X .88 X .03
22	711803	1	COTTER PIN-HAIR
23	711903	4	RIVET-POP 3/16"
24	712323	1	WSR-FLT .195 X .281 X .03SS
25	712540	4	SCR-MC TR HD 10-24 X .37 SS
26	712638	4	NUT, HEX 10-24 SS NYLOC
27	829115	1	VEEJET 1/4"
28	830082	1	HOSE CLAMP 3/8
29	833384	1	VALVE-BALL TYPE CHECK, 1/4" AB
30	270162MCH	1	TELESCOPING WAND (MACHINED)
31	281048MCH	1	SQUEEGEE NOZZLE - 12" (MACHINED)



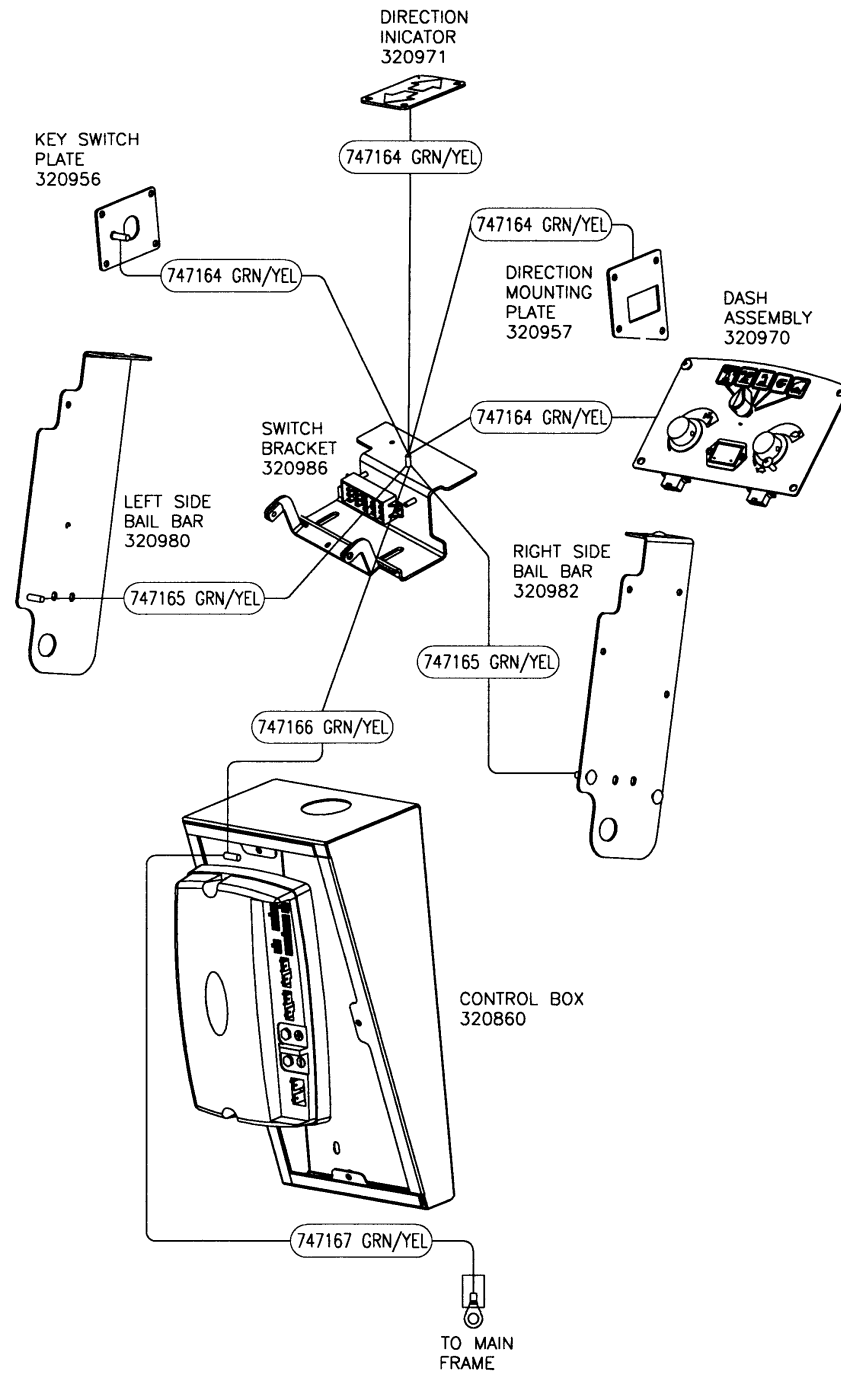
BILL OF MATERIALS OFF AISLE WAND KIT			
ITEM	PART NO.	REQ'D	DESCRIPTION
1	ES2832	1	MAIN ASSY
2	281071	1	OFF AISLE WAND ASSY, 2800
3	260579	3	TOOL CLIP, 1.5" HOSE
4	710528	10	SCR-MC 8-32 X .37 BRS
5	270161	2	TOOL CLIP
6	320899	1	HANGER HOOK WMT
7	712822	2	SCR-MC TR HD 10-24 X .50 SS
8	320999	1	ES2832 WAND ADAPTER ASY
9	800020	1	1 1/2" HOSE CPLG
10	260149	1	U CHANNEL 12"
11	711124	2	SCR - ST - 8 10 X .37 NI



[illegible]



GROUNDING



P2: TRIO CONNECTOR

PIN #	COLOR	FUNCTION
1	GRAY/RED	WATER SOLENOID VALVE
2	GRAY/BLACK	WATER SOLENOID VALVE
3	YELLOW/ORANGE	SQUEEGE ACTUATOR
4	BLUE/GREEN	BRUSH ACTUATOR
5	WHITE/YELLOW	WATER FLOW POTENTIOMETER (SLOW)
6	—	—
7	WHITE/RED	WATER FLOW POTENTIOMETER (WIPER)
8	VIOLET/BLACK	WATER PUMP
9	BLACK/VIOLET	WATER PUMP
10	YELLOW/BLUE	SQUEEGE ACTUATOR
11	BLUE/ORANGE	BRUSH ACTUATOR
12	WHITE/GREEN	WATER FLOW POTENTIOMETER (FAST)
13	—	—
14	—	—

P3: TRIO CONNECTOR

PIN #	COLOR	FUNCTION
1	YELLOW/RED	5 MODE SWITCH: LIGHT SCRUB
2	YELLOW/BLACK	5 MODE SWITCH: HEAVY SCRUB
3	YELLOW	5 MODE SWITCH: TRANSPORT
4	WHITE ORANGE	BELLY BAR SWITCH
5	BLUE/WHITE	DECK RAISE/LOWER SWITCH
6	RED/YELLOW	BATTERY GAUGE SIGNAL
7	—	—
8	RED/WHITE	ON/OFF REF (B+)
9	BLACK/ORANGE	SPEED POTENTIOMETER (SLOW)
10	BLACK/PINK	SPEED POTENTIOMETER/TRACTION SWITCH
11	YELLOW/WHITE	5 MODE SWITCH: VACUUM ONLY
12	YELLOW/GRAY	5 MODE SWITCH: DOUBLE SCRUB
13	YELLOW/VIOLET	REVERSE SWITCH
14	—	—
15	WHITE/BLUE	OFF ISLE WAND
16	RED/BLACK	HIGH SWITCH REF 5VDC
17	BLUE/YELLOW	HOUR METER
18	RED/VIOLET	ON/OFF INPUT—KEY SWITCH
19	BLACK/RED	LOW SWITCH REF 0VDC
20	BLACK/WHITE	SPEED POTENTIOMETER (FAST)

C4: KEY SWITCH

PIN #	HARNESS COLOR	FUNCTION
1	RED/WHITE	POSITIVE TO LEDS
2	RED/VIOLET	SIGNAL—TRIO KSI P3:18
3	RED/WHITE	+V FROM TRIO P3:8
4	EMPTY	—

BATTERY GAUGE

PIN #	HARNESS COLOR	FUNCTION
1	RED	SWITCHED 36VDC:P3-18
2	YELLOW	SIGNAL: P3-6
3	BLACK	SIGNAL REF 0V
4	WHITE	ESD DISCHARGE

C6: MODE SELECTOR SWITCH

SWT #	PIN #	COLOR	FUNCTION
1	1	YELLOW/BLACK	HEAVY SCRUB
2	2	YELLOW/RED	LIGHT SCRUB
3	3	YELLOW/GRAY	DOUBLE SCRUB
4	4	YELLOW/WHITE	VACUUM ONLY
5	5	YELLOW	TRANSPORT
C	6	RED/BLACK	SWITCH REF 5V

LIMITED WARRANTY

PowerBoss, Inc. warrants to the original purchaser/user that this product is free from defects in workmanship and materials under normal use and service for a period of three years from date of purchase. In addition, PowerBoss Inc. will, at its option, honor labor warranty claims for the first 36 months from date of sale, provided such claims are submitted through and approved by factory authorized repair stations. PowerBoss Inc. will, at its option, repair or replace without charge, except for transportation costs, parts that fail under normal use and service when operated and maintained in accordance with the applicable operation and instruction manuals.

This warranty does not apply to normal wear, or to items whose life is dependent on their use and care, such as belts, cords, switches, hoses, rubber parts, electrical motor components or adjustments. Parts not manufactured by PowerBoss Inc. such as engines, batteries, battery chargers, hydraulic pumps, and tires are covered by and subject to the warranties and/or guarantees of their manufacturers. Please contact PowerBoss Inc. for procedures in warranty claims against these manufacturers.

Special warning to purchaser -- Use of replacement filters and/or pre-filters not manufactured by PowerBoss Inc. or its designated licensees, will void all warranties expressed or implied.

A potential health hazard exists without exact original equipment replacement.

All warranted items become the sole property of PowerBoss Inc. or its original manufacturer, whichever the case may be.

PowerBoss Inc. disclaims any implied warranty, including the warranty of merchantability and the warranty of fitness for a particular purpose. Minuteman International, Inc. assumes no responsibility for any special, incidental or consequential damages.

This limited warranty is applicable only in the U.S.A. and Canada, and is extended only to the original user/purchaser of this product. Customers outside the U.S.A. and Canada should contact their local distributor for export warranty policies. PowerBoss Inc. is not responsible for costs or repairs performed by persons other than those specifically authorized by PowerBoss Inc. This warranty does not apply to damage from transportation, alterations by unauthorized persons, misuse or abuse of the equipment, use of non-compatible chemicals, or damage to property, or loss of income due to malfunctions of the product.

If a difficulty develops with this machine, you should contact the dealer from whom it was purchased.

This warranty gives you specific legal rights, and you may have other rights which vary from state to state. Some states do not allow the exclusion or limitation of special, incidental or consequential damages, or limitations on how long an implied warranty lasts, so the above exclusions and limitations may not apply to you.

PowerBoss®
The Power of Clean

Powerboss, Inc.
175 Anderson Street
Aberdeen, NC 28315

(910) 944-2168
FAX (910) 627-1130
techsupport@powerboss.com

Printed in U.S.A.
11/07