



SS20

Scrubber/Sweeper



American Made... Built to Last

BULLDOG SS20 SCRUBBER/SWEEPER

Scrub, Sweep, and Dry up to 23,000 Square Feet Per Hour

Productivity	
Maximum Coverage	23,800 sq ft/hour
Estimated Actual Coverage	16,065 sq ft/hour

Brush System	
Cleaning Path	20 inches
Brush Motor Horsepower	.75 hp
Brush Motor Speed	600 rpm

Solution System	
Tank Construction	Rotational Molded Poly
Capacity	12 Gallons

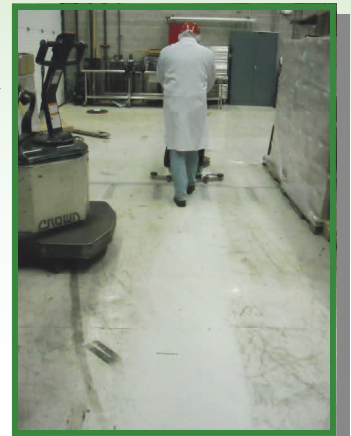
Recovery System	
Tank Construction	Rotational Molded Poly
Tank Access	Full Top Access
Capacity	13 Gallons
Vacuum Motor	.60 hp
Squeegee Type	Stainless Steel Parabolic

Drive System	
Transport Speed	3 mph
Working Speed	2.3 mph

The Bulldog Niche:

Bulldog management has been providing cleaning equipment for America's toughest applications for decades. We have been frustrated in recent years by the lack of heavy duty equipment for smaller applications. Most compact auto scrubbers available today were not designed for heavy daily use. Our goals for the Bulldog were simple. It must be:

- Able to withstand daily use in tough environments
- Easy to use and clean up
- Reliable
- Affordable
- Simple to repair



Take a closer look at the Bulldog line. The American-Made quality is easy to see.

Watch our demo videos at:

www.bulldogscrubbers.com



KEY FEATURES

- Automatic brush install/removal
- Ergonomic adjustable controls
- Unique stainless steel squeegee tool with urethane blade leaves floors dry
- Easy access recovery tank



Offset Scrub Head and Optional Remote Scrub and Vac Wand Allow you to Clean Almost Anywhere.



GREEN, CLEAN, AND MEAN

www.thesweeper.com

800-793-3790