



Epoxy Mortar Patch Kits

Concrete Repair Products Engineered To Last

Advantages

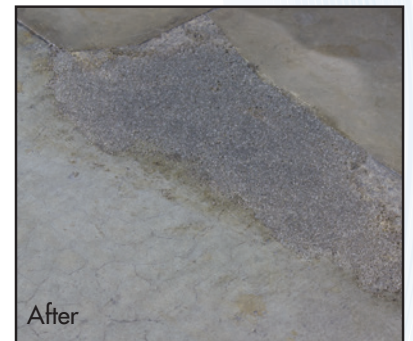
- Simple** – Easy to install – Do it yourself
- Durable** – Permanent patching of concrete
- Convenient** – Pre measured packaging
- Economical** – Low cost – Few special tools needed
- Fast** – Forklift traffic in as little as 6 hours

Benefits

- Reduces maintenance costs
- Reduces damaged inventory
- Eliminates tripping and other safety hazards
- 100% solids – No solvent odor



Before



After

Everything you need to patch the floor is in the bucket.

Buried in the sand are two metal cans containing parts A and B of the epoxy. These will be mixed with the sand to create your mortar mix.

Epoxy Mortar Patch Kits Installation Instructions



Prepare damaged area

- 1 Clean out the area to be patched with a wire brush, wire wheel attachment on the drill, or a concrete grinder. Remove any loose pieces of concrete and stone.
- 2 Vacuum the area to be patched to remove dirt, dust, and loose concrete.
- 3 Prior to mixing the material, prepare enough holes and cracks to use the entire mix of epoxy mortar. Once the material is mixed, you have approximately 30 to 40 minutes of working time.
- 4 In a separate container, mix liquid parts A and B with the mixer attachment on the drill. Use the entire container of each.
- 5 Slowly add the sand to the mixed liquid and mix with the drill mixer attachment until fully blended.
- 6 Using the trowel, fill the prepared areas and finish smoothly with the trowel.



Mix liquid parts A & B then slowly add sand



Apply mix to damaged area and smooth with trowel



Covers 43 sq ft @ 1/8" depth

Available in two
Convenient Sizes.



Covers 11 sq ft @ 1/8" depth

