

# EDGE

## SURFACE PREPARATION EQUIPMENT MANUAL



***EDGE ST and HD Model Owner's Manual***  
***[www.edgescrubber.com](http://www.edgescrubber.com)***



**Contents:**

- **Introduction to the Edge-20ST and HD**
- **Safety Notice**
- **Transport of Machine**
- **Operating Instructions**
- **Troubleshooting Guide**
- **Parts Breakdown**
- **Warranty Information**

**Selling/Servicing**

- **Distributor Name:** \_\_\_\_\_
- **Address:** \_\_\_\_\_
- **Phone:** \_\_\_\_\_
- **Contact:** \_\_\_\_\_

**Purchase Date:** \_\_\_\_\_

**Machine Serial #:** \_\_\_\_\_

**NOTES:**

---

---

---

**Distributed By:**  
**RPS Corporation**  
**1711 South Street / Racine, WI 53404 (USA)**  
**www.edgescrubber.com**  
**Phone: 800-450-9824**



#### **INTRODUCTION TO THE EDGE 20-ST & HD**

**Thank you for making the decision to purchase an Edge 20. This machine is proudly built in the USA, with quality materials and will give you many years of satisfactory service if properly maintained and used according to the guidelines in this owner's manual.**

#### **SAFETY**

***DANGER: Indicates an imminently hazardous situation which, if not avoided, may result in death or serious injury.***

***WARNING: Indicates a potentially hazardous situation, which, if not avoided, may result in death or serious injury.***

***CAUTION: Indicates that machine or property damage could result if instructions are not followed.***

***NOTE: Provides helpful information.***

***Severe bodily injury or death can occur to you or other personnel if warnings found on this machine or in this Owner's Manual are ignored. Read and Observe all statement and instructions found on the machine and in the Owner's Manual.***

#### **DANGER:**

- ***Never leave the machine unattended while power cord is connected.***
- ***Always wear safety goggles and dust mask when operating this machine.***
- ***Never inhale dust created by the use of this machine.***
- ***Any modifications to this machine may result in damage to the machine or injury to the operator or others nearby. Alterations to the machine will also void any and all warranty and liabilities.***
- ***Do not operate this machine around fuels, solvents, flammable floor finishes, thinners, wood dust or any flammable materials. Cigarette lighters, pilot lights, electrical sparks and all other sources of ignition should be extinguished or avoided. Work areas should be well ventilated.***
- ***Keep the power cord clear of the pad and in good condition. Always life the cord over the machine. Do not pull on the power cord in an attempt to move the machine or remove the plug from the wall. This could result in electrocution.***
- ***Do not use machine if it has been sprayed with water or left out in the rain. This could result in a shock injury or death.***
- ***Keep feet, hands, and loose clothing away from any moving parts on the machine to avoid injury. Disconnect power cord before changing the pad or when servicing.***

# EDGE

## **CAUTION:**

- ***Damage can occur to the machine or to other property if instructions in the Owner's Manual are not followed.***

## **WARNING:**

- ***Do not operate this machine while under the influence of alcohol or other drugs.***
- ***Never allow individuals under age 18 to operate this machine.***
- ***Unplug machine from power source before adjusting height of handle or changing pad.***
- ***Never attempt to move the machine by pulling the power cord.***

## **•TRANSPORT OF MACHINE**

- ***To transport this machine, the following procedure is advised:***

- ***Unplug machine from power source***
- ***Always leave a pad on the machine to protect the grip face from damage in transport and storage.***
- ***Wrap cord using built in cord wrap and handle as picture illustrates.***



- ***Raise handle and lock in upright position.***
- ***Tilt machine onto wheels and transport slowly.***
- ***When lifting machine, it is suggested for two users to participate. With one user on each side of the machine, grip lifting bars at the base of machine with one hand. Grip the handle with the other hand and lift.***
- ***Secure machine when transporting in a vehicle to prevent movement.***
- ***Caution: The ST model weighs 130 lbs and the HD model weighs 165 lbs. Get assistance when lifting. Do not attempt to lift alone.***



### **OPERATING INSTRUCTIONS**

1. ***Move machine to work location. Never transport or store the machine without a pad to protect the grip face.***
2. ***Check the pad. If it has become reduced to a thickness of less than ½” replace the pad.***
3. ***To install or replace pad, follow these instructions:***
  - a) ***Make certain power source is disconnected***
  - b) ***Lock handle in upright position***
  - c) ***Tilt machine back until the handle rests on the floor***
  - d) ***Remove existing pad and replace with new pad. Center pad when placing on grip face***
  - e) ***Press pad firmly into grip face***
  - f) ***Return machine to upright position***
- \*\* When using a EQP (PREP) “abrasive” pad, place the pad on the floor and slowly lower machine onto pad, making certain the pad is centered on the machine and RED pad. Do not operate PREP Pad or Sanding material directly on the grip face.***
4. ***Connect cord to power source.***
5. ***Release and lower handle to a comfortable position. Lock handle into position. The best operating position is at arm’s length to help with control of machine and to improve operator comfort. Maintain the machine flat on the floor for ease of operation. Raising or lowering the handle can cause the machine to pull to the right or left, and uneven pressure/wear on the pad surface. A neutral handle position will provide a neutral operation and uniform contact of the pad to the floor surface.***
6. ***Squeeze the power bar with both hands to start machine. Release power bar to stop machine.***
7. ***NOTE: Releasing power bar will immediately stop the machine***



## **TROUBLESHOOTING GUIDE**

<b><i>Problem</i></b>	<b><i>Cause</i></b>	<b><i>Action</i></b>
<b><i>Machine will not start</i></b>	<b><i>Not Connected to Power Source Defective Switch</i></b>	<b><i>Check power source connection Contact Authorized EDGE Dealer</i></b>
<b><i>Runs erratically</i></b>	<b><i>Low voltage from excessive length or undersized extension cord Defective start switch Defective motor low voltage</i></b>	<b><i>Use 12 ga. Extension cord not more than 25' long Contact Authorized EDGE Dealer Contact Authorized EDGE Dealer</i></b>
<b><i>Fuse/Circuit Breaker trips</i></b>	<b><i>Low Voltage</i></b>	<b><i>Allow the motor to cool. The circuit breaker is a red button on the side of the motor that will reset when pressed.  Eliminate extension cord.  Locate power cord closer to work site.  Have AC voltage checked by electrician.</i></b>
<b><i>Machine pulls hard to one side</i></b>	<b><i>Rubber isolators worn out</i></b>	<b><i>Replace isolators</i></b>
<b><i>Machine is louder than when new</i></b>	<b><i>Rubber isolators worn out</i></b>	<b><i>Replace isolators</i></b>

***NOTE: The rubber isolators on the EDGE-20 are considered a Wear Item. It is recommended to replace the entire set of all four isolators at least every 100 hours of machine operation to prevent failure and damage to the machine.***

***Distributed By:  
RPS Corporation  
1711 South Street / Racine, WI 53404 (USA)  
www.edgescrubber.com  
Phone: 800-450-9824***



**LIMITED WARRANTY**

*This product is warranted to be free from defects in materials and workmanship under normal use and service for a period of two years from the date of purchase, when operated and maintained in accordance with our Maintenance and Operating Instructions. Damage due to misuse or improper care will not be repaired under warranty.*

*This warranty is extended only to the original purchaser for use of the product. It does not cover normal wear and tear parts such as electrical cable, rubber parts, pad driver, and motor brushes. NOTE: The rubber isolators are considered wearable parts. It is recommended that the entire set of four isolators be replaced every 100 hours of machine operation at a minimum.*

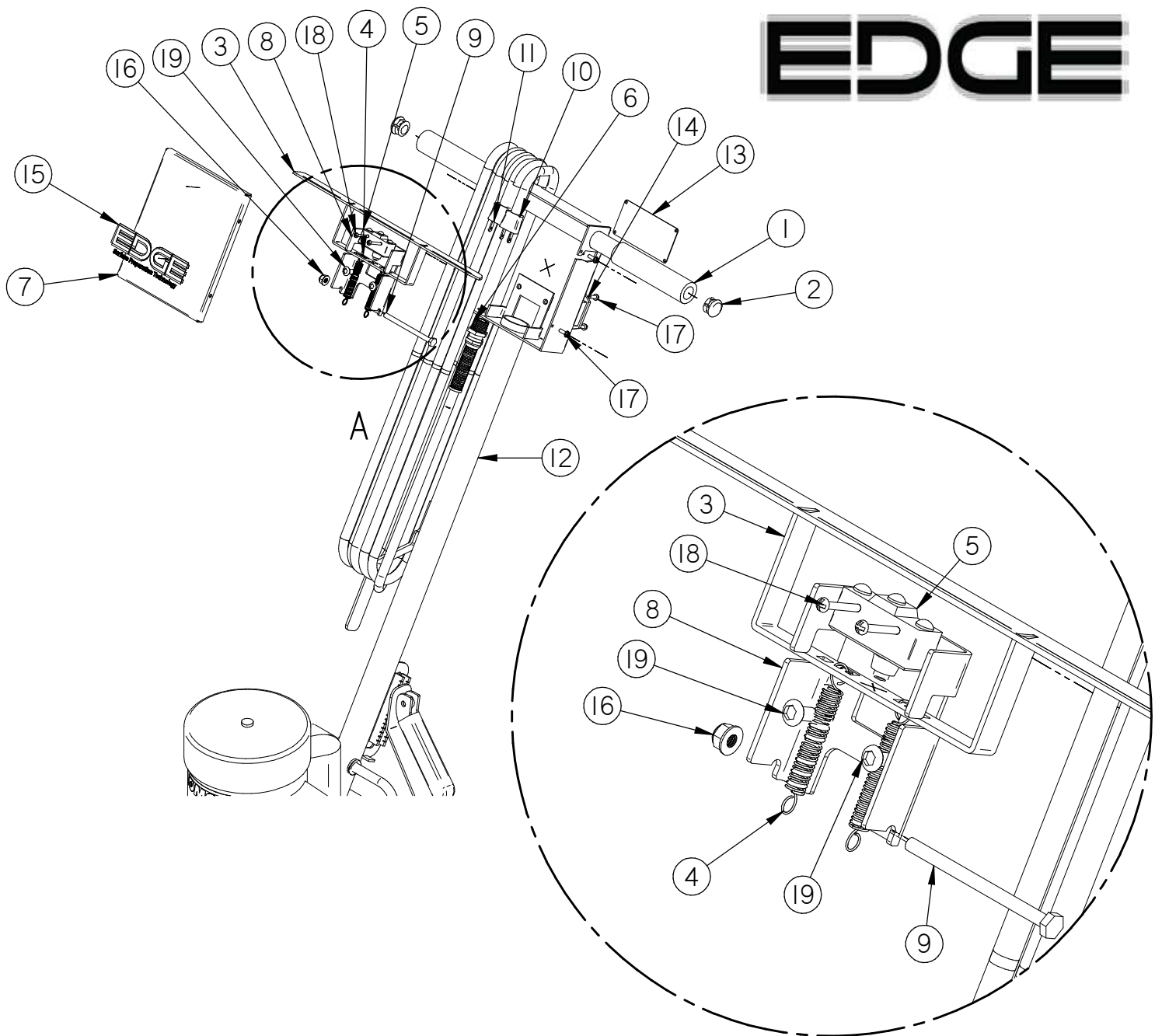
*If a difficulty develops with the product, contact your Authorized distributor or call us directly at the number below. Repairs and warranty consideration can only be conducted by approved distributors. Travel to and from the repair center is NOT covered by the warranty, and is the responsibility of the customer.*

*RPS's liability under this warranty is limited to repair of the product and/or replacement of parts only, and is given to the purchaser in lieu of all other remedies, including INCIDENTAL AND CONSEQUENTIAL DAMAGES.*

***THERE ARE NO EXPRESS WARRANTIES OTHER THAN THOSE SPECIFIED HEREIN. THERE ARE NO WARRANTIES WHICH EXTEND BEYOND THE DESCRIPTION OF THE FACE HEROF. NO WARRANTIES, INCLUDING BUT NOT LIMITED TO WARRANTY OF MERCHANTABILITY, SHALL BE IMPLIED. Please register your machine on our website within thirty days of purchase.***

***Distributed By:  
RPS Corporation  
1711 South Street / Racine, WI 53404 (USA)  
www.edgescrubber.com  
Phone: 800-450-9824***

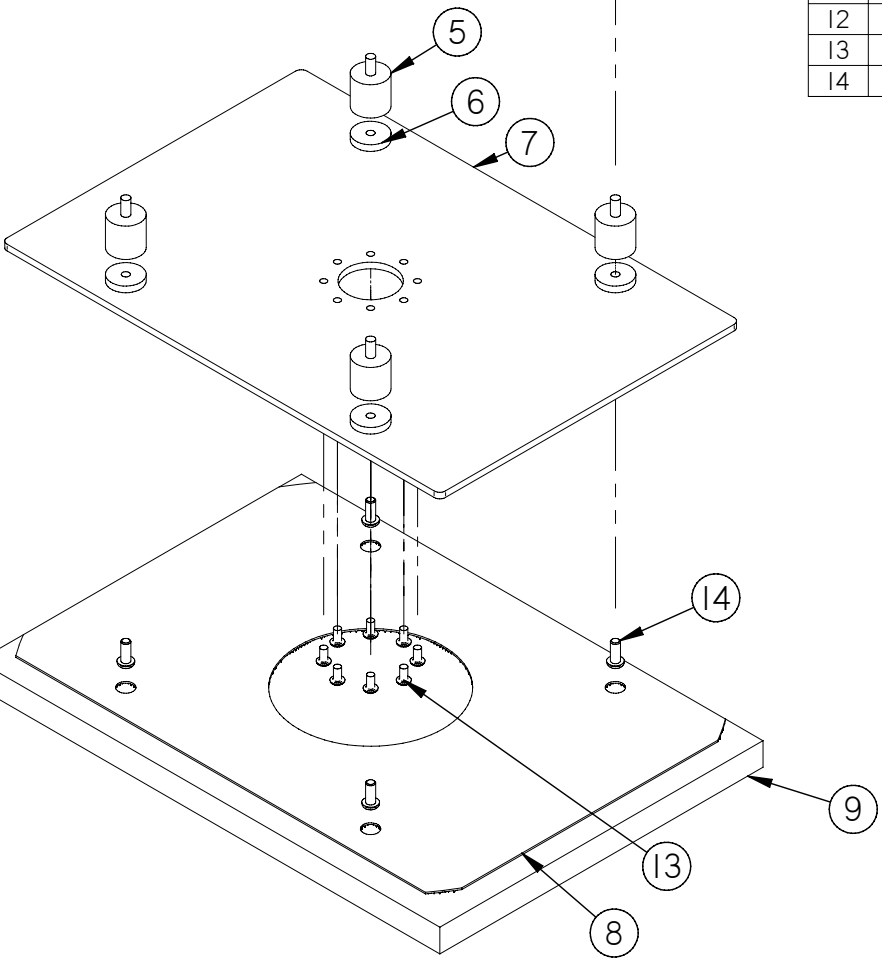
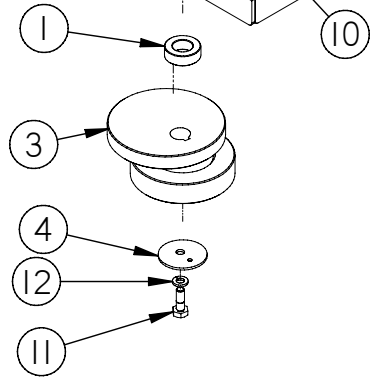
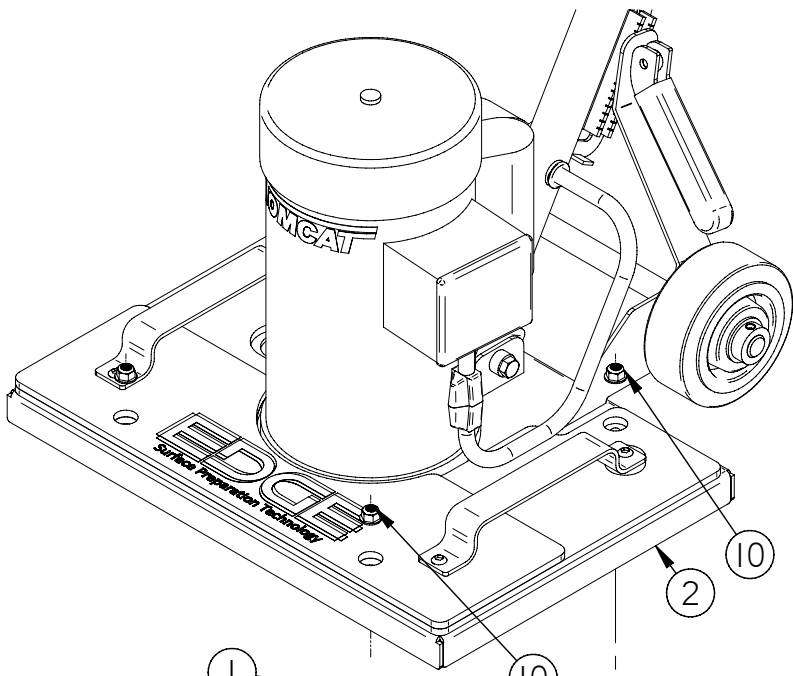
# EDGE



DETAIL A

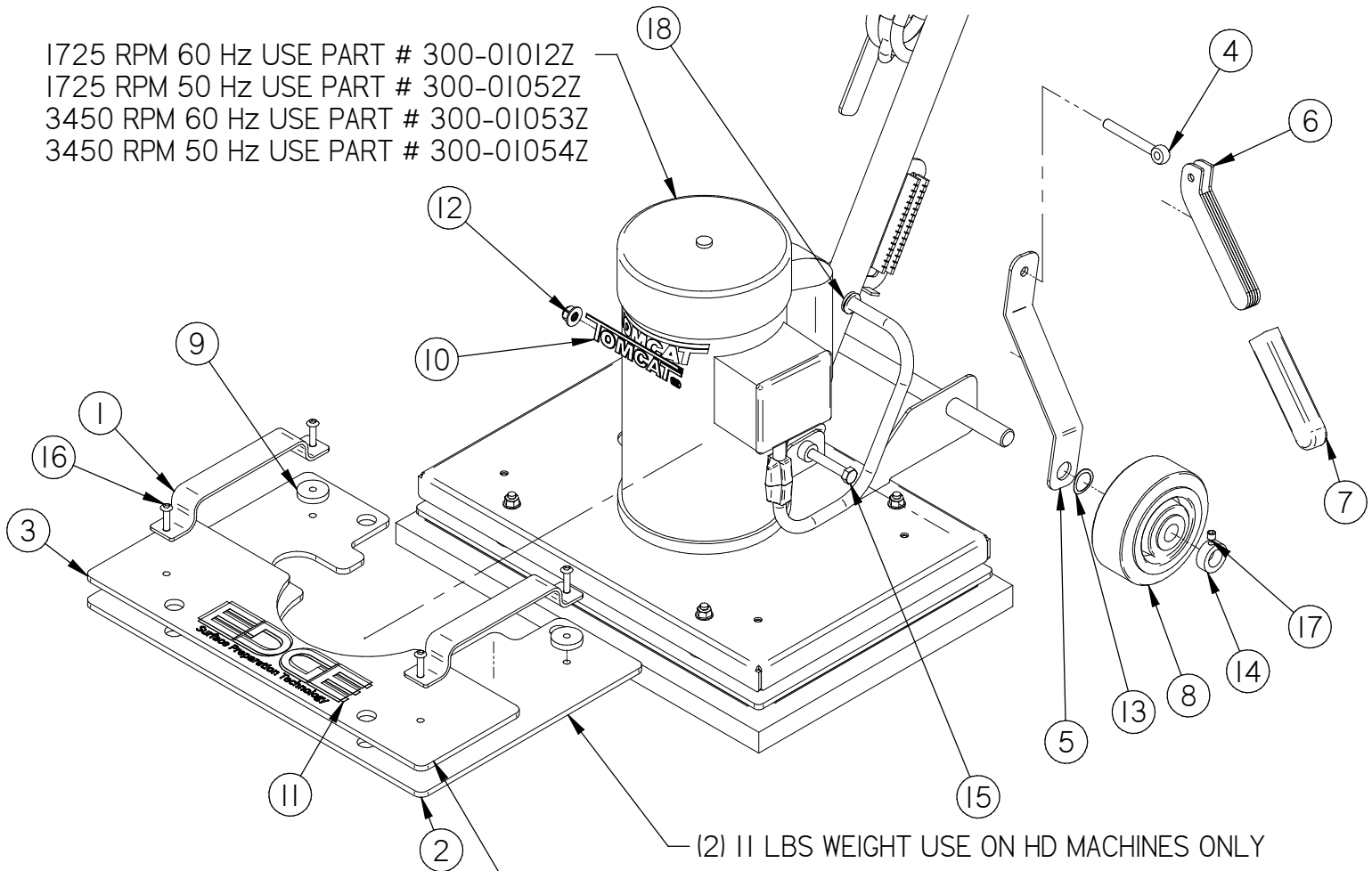
Item	Part No.	Part Description	Qty.
1	300-01001Z	HAND GRIP	2
2	300-01002Z	HANDLE PLUG	2
3	300-01003Z	SWITCH BAR	1
4	300-01004Z	SWITCH SPRING	2
5	300-01005Z	MICRO SWITCH	1
6	300-01006Z	CORD STRAIN RELIEF	1
7	300-01007Z	SWITCH COVER	1
8	300-01008Z	SWITCH ACTUATOR GUIDE	1
9	300-01010Z	SWITCH ACTUATOR BOLT	1
10	300-01013Z	50 FT POWER CORD	1
11	300-01014Z	100 FT POWER CORD	1
12	300-01015Z	HANDLE BAR	1
13	4-101	SERIAL NUMBER PLATE	1
14	8-262	HOUR METER	1
15	EDGE-7203	5 INCH EDGE STICKER	1
16	H-0167030	FLANGED NYLOK 1/4-20	1
17	H-32404	FB #8-32 X 3/4"	4
18	H-72390	PPH #6-32 X 1" MS S/S	2
19	H-73752	BHSCS 1/4 - 20 X 1/2" SS	2





Item	Part No.	Part Description	Qty.
1	300-01016Z	MOTOR SHAFT SPACER	1
2	300-01027Z	MACHINE BASE	1
3	300-01029ZA	ECCENTRIC BEARING ASSEMBLY	1
4	300-01030Z	CRUSH WASHER	1
5	300-01032Z	RUBBER ISOLATOR	4
6	300-01033Z	SPACER	4
7	300-01034Z	20 INCH ALUMINUM PAD DRIVER	1
8	300-01037Z	20 INCH PAD GRIP FACE	1
9	EDGE-4004	RED PAD 14" X 20"	1
10	H-0167031	FLANGED NYLOK 5/16-18	4
11	H-70041	HCS 1/4"-28 X 3/4" SS	1
12	H-71063	LW 1/4" SS	1
13	H-73752	BHSCS 1/4 - 20 X 1/2" SS	8
14	H-73779	BHSCS 5/16-18 X 3/4"	4

1725 RPM 60 Hz USE PART # 300-01012Z  
 1725 RPM 50 Hz USE PART # 300-01052Z  
 3450 RPM 60 Hz USE PART # 300-01053Z  
 3450 RPM 50 Hz USE PART # 300-01054Z



(2) 11 LBS WEIGHT USE ON HD MACHINES ONLY

(2) 6 LBS WEIGHTS USED ON STANDARD MACHINES

(4) 6 LBS WEIGHTS USED ON HD MACHINES

Item	Part No.	Part Description	Qty.
1	300-01018Z	LIFT HANDEL	2
2	300-01018ZB	11 LB DECK WEIGHT	1
3	300-01018ZC	6 LB DECK WEIGHT	1
4	300-01020Z	HANDLE LOCK EYE BOLT	1
5	300-01021Z	HANDLE LOCK STAY	2
6	300-01022Z	HANDLE LOCK HANDLE	1
7	300-01023Z	HANDLE LOCK COVER	1
8	300-01025Z	WHEEL	2
9	300-01033Z	SPACER	2
10	370-7203	TOMCAT STICKER	1
11	EDGE-7204	8 INCH EDGE STICKER	1
12	H-0167032	FLANGED NYLOK 3/8-16	2
13	H-05231	WW 3/4 ID X 10D SS	2
14	H-33376	SHAFT COLLAR, 3/4" ID X 9/16 LG	2
15	H-71193	HCS 3/8"- 16 X 3-1/2" SS	1
16	H-73755	BHSCS 1/4 - 20 X 1" SS	4
17	H-81983	5/16" X 1/4" KURL SET SCREW	2
18	M-9307K23	GROMMET, 3/8 ID X 7/8 OD X 1/8 TH.	1